

For Research Use Only

# Anti-Mouse CD62L (L-Selectin) (MEL-14)



Catalog Number: 65123-1-Ig **2 Publications**

## Basic Information

<b>Catalog Number:</b> 65123-1-Ig	<b>GenBank Accession Number:</b> BC052681	<b>Purification Method:</b> Affinity purification
<b>Size:</b> 100ug, 0.5 mg/ml	<b>GeneID (NCBI):</b> 20343	<b>CloneNo.:</b> MEL-14
<b>Source:</b> Rat	<b>UNIPROT ID:</b> P18337	
<b>Isotype:</b> IgG2a, kappa	<b>Full Name:</b> selectin, lymphocyte	

## Applications

**Tested Applications:**  
FC

**Cited Applications:**  
FC

**Species Specificity:**  
Mouse

**Cited Species:**  
mouse

## Background Information

CD62L, also known as L-selectin or SELL, is a member of the selectin family of adhesion molecules that also include CD62E (E-selectin) and CD62P (P-selectin) (PMID: 2663882, 2473156, 1382078). CD62L is a highly glycosylated protein of 95-105 kDa on neutrophils and 74 kDa on lymphocytes (PMID: 1382078; 1694883, 1695155). CD62L is expressed on the surface of most leukocytes, including lymphocytes, neutrophils, monocytes, eosinophils, hematopoietic progenitor cells, and immature thymocytes (PMID: 1694883, 1688580). It mediates the binding of lymphocytes to high endothelial venules (HEV) of peripheral lymph nodes through interactions with a constitutively expressed ligand, and is also involved in lymphocyte, neutrophil, and monocyte attachment to endothelium at sites of inflammation (PMID: 1382078).

## Notable Publications

Author	Pubmed ID	Journal	Application
Haoran Wang	35087966	Bioact Mater	FC
Yanqin Zhang	39043825	Nat Nanotechnol	FC

## Storage

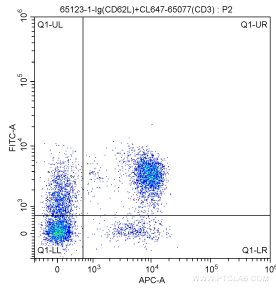
**Storage:**  
Store at 2-8°C. Stable for one year after shipment.

**Storage Buffer:**  
Phosphate based buffer with 0.09% sodium azide, pH 7.2.

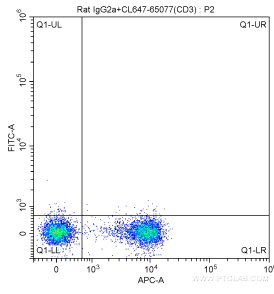
For technical support and original validation data for this product please contact:  
T: 4006900926 E: Proteintech-CN@ptglab.com W: ptgcn.com

This product is exclusively available under Proteintech Group brand and is not available to purchase from any other manufacturer.

## Selected Validation Data



1X10<sup>6</sup> C57BL/6 mouse splenocytes were surface stained with 5 ul CoraLite® Plus 647-conjugated Anti-Mouse CD3 (CL647-65077, Clone: 17A2), and 0.5 ug Anti-Mouse CD62L (L-Selectin) (65123-1-Ig, Clone: MEL-14) and FITC Anti-Rat IgG2a Antibody at dilution 1:200. Cells were not fixed.



1X10<sup>6</sup> C57BL/6 mouse splenocytes were surface stained with 5 ul CoraLite® Plus 647-conjugated Anti-Mouse CD3 (CL647-65077, Clone: 17A2), and 0.5 ug Rat IgG2a Isotype Control and FITC Anti-Rat IgG2a Antibody at dilution 1:200. Cells were not fixed.