

For Research Use Only

# Anti-Mouse CD8a (5H10-1)

Catalog Number: 65205-1-Ig



## Basic Information

<b>Catalog Number:</b> 65205-1-Ig	<b>GenBank Accession Number:</b> BC030679	<b>Purification Method:</b> Protein A purification
<b>Size:</b> 100ug, 0.5 mg/ml	<b>GeneID (NCBI):</b> 12525	<b>CloneNo.:</b> 5H10-1
<b>Source:</b> Rat	<b>UNIPROT ID:</b> P01731	
<b>Isotype:</b> IgG2b, lambda	<b>Full Name:</b> CD8 antigen, alpha chain	

## Applications

**Tested Applications:**  
FC

**Species Specificity:**  
Mouse

## Background Information

CD8 is a transmembrane glycoprotein composed of two disulfide-linked chains. It can be present as a homodimer of CD8 $\alpha$  or as a heterodimer of CD8 $\alpha$  and CD8 $\beta$  (PMID: 3264320; 8253791). CD8 is found on most thymocytes. The majority of class I-restricted T cells express mostly the CD8 $\alpha$  $\beta$  heterodimer while CD8 $\alpha$  $\alpha$  homodimers alone have been found on some gut intraepithelial T cells, on some T cell receptor (TCR)  $\gamma$   $\delta$  T cells and on NK cells (PMID: 2111591; 1831127; 8420975). CD8 acts as a co-receptor that binds to MHC class-I and participates in cytotoxic T cell activation (PMID: 8499079). During T cell development, CD8 is required for positive selection of CD4-/CD8+ T cells (PMID: 1968084).

## Storage

**Storage:**  
Store at 2-8°C. Stable for one year after shipment.

**Storage Buffer:**  
PBS with 0.1% sodium azide, pH 7.3.

For technical support and original validation data for this product please contact:

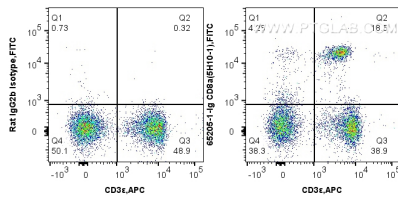
T: 4006900926

E: [Proteintech-CN@ptglab.com](mailto:Proteintech-CN@ptglab.com)

W: [ptgcn.com](http://ptgcn.com)

This product is exclusively available under Proteintech Group brand and is not available to purchase from any other manufacturer.

## Selected Validation Data



$1 \times 10^6$  C57BL/c mouse splenocytes were surface co-stained with APC Anti-Mouse CD3  $\epsilon$  and 0.25  $\mu$ g Anti-Mouse CD8a (65205-1-Ig, Clone:5H10-1) and FITC anti-rat IgG2b Antibody at dilution 1:100, or rat IgG2b Isotype Control and FITC anti-rat IgG2b Antibody at dilution 1:100. Cells were not fixed.