

For Research Use Only

Anti-Human IL-12 (1E12H6), PBS Only

Catalog Number: 65277-1-PBS



Basic Information

Catalog Number: 65277-1-PBS	GenBank Accession Number: BC104982	Purification Method: Affinity purification
Concentration: 100ug,	GeneID (NCBI): 3592	CloneNo.: 1E12H6
Source: Mouse	Full Name: interleukin 12A (natural killer cell stimulatory factor 1, cytotoxic lymphocyte maturation factor 1, p35)	
Isotype: IgG1	Calculated MW: 25 kDa	
Immunogen Catalog Number: HZ-1256		

Applications

Tested Applications:
FC (Intra)

Species Specificity:
human

Background Information

IL-12 is a heterodimeric cytokine composed of two glycosylated and disulfide-linked subunits (p40 cysteine-linked to p35). IL-12 is a potent regulator of cell mediated immune responses and it induces IFN-gamma production by NK and T cells. It is produced by activated monocytes/macrophage cells, B lymphocytes, and connective tissue type mast cells (PMID: 24821971; 7612223).

Storage

Storage:
-20°C.

The product is shipped with ice packs. Upon receipt, store it immediately at -80°C

Storage Buffer:
PBS Only

Aliquoting is unnecessary for -20°C storage

For technical support and original validation data for this product please contact:

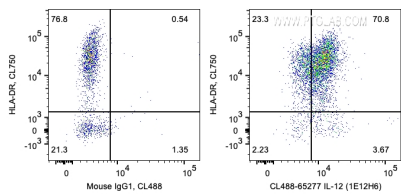
T: 4006900926

E: Proteintech-CN@ptglab.com

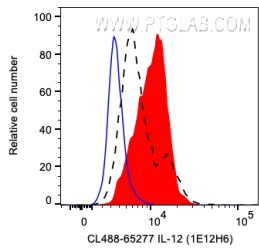
W: ptgcn.com

This product is exclusively available under Proteintech Group brand and is not available to purchase from any other manufacturer.

Selected Validation Data



1X10⁶ LPS and Brefeldin A treated human PBMCs were surface stained with CoraLite® Plus 750 Anti-Human HLA-DR then intracellularly stained with 0.2 ug CoraLite® Plus 488 Anti-Human IL-12 (CL488-65277, Clone:1E12H6) or Mouse IgG1 Isotype Control. Cells were fixed and permeabilized with Transcription Factor Staining Buffer Kit (PF00011). Monocytes were gated. This data was developed using the CoraLite® Plus 488 conjugated antibody of 65277-1-Ig. This data



1X10⁶ LPS and Brefeldin A treated human PBMCs were intracellularly stained with 0.2 ug CoraLite® Plus 488 Anti-Human IL-12 (CL488-65277, Clone:1E12H6) (red) or Mouse IgG1 Isotype Control (blue), or unstimulated and Brefeldin A treated human PBMCs were intracellularly stained with 0.2 ug CoraLite® Plus 488 Anti-Human IL-12 (CL488-65277, Clone:1E12H6) (black, dashed line). Cells were fixed and permeabilized with Transcription Factor Staining Buffer Kit