

For Research Use Only

Anti-Human IL-10 (7B8G3), PBS Only

Catalog Number: 65286-1-PBS



Basic Information

Catalog Number: 65286-1-PBS	GenBank Accession Number: BC104252	Purification Method: Affinity purification
Concentration: 100ug, 1 mg/ml	GeneID (NCBI): 3586	CloneNo.: 7B8G3
Source: Mouse	Full Name: interleukin 10	
Isotype: IgG2b	Calculated MW: 21 kDa	
Immunogen Catalog Number: HZ-1145		

Applications

Tested Applications:
FC

Species Specificity:
human

Background Information

Interleukin (IL)-10 is an anti-inflammatory cytokine, produced by T helper (Th) cells, macrophages, monocytes, and B cells, that plays a crucial role in preventing inflammatory and autoimmune pathologies. It downregulates the expression of Th1 cytokines, MHC class II antigens, and co-stimulatory molecules on macrophages. It also enhances B cell survival, proliferation, and antibody production. IL-10 can block NF- κ B activity, and is involved in the regulation of the JAK-STAT signaling pathway. IL-10, along with its receptors, describes an important role in pathogenesis of various diseases, including infectious, inflammatory, autoimmune diseases. IL-10 mutations are associated with an increased susceptibility to HIV-1 infection and rheumatoid arthritis.

Storage

Storage:
Store at -80°C.
The product is shipped with ice packs. Upon receipt, store it immediately at -80°C

Storage Buffer:
PBS Only

For technical support and original validation data for this product please contact:

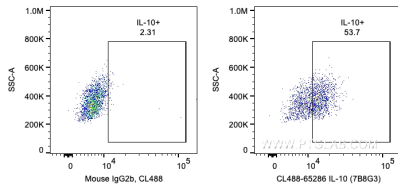
T: 4006900926

E: Proteintech-CN@ptglab.com

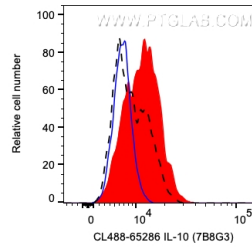
W: ptgcn.com

This product is exclusively available under Proteintech Group brand and is not available to purchase from any other manufacturer.

Selected Validation Data



1X10⁶ LPS and Brefeldin A treated human PBMCs were intracellularly stained with 0.2 ug CoraLite® Plus 488 Anti-Human IL-10 (CL488-65286, Clone:7B8G3) or Mouse IgG2b Isotype Control. Cells were fixed and permeabilized with Transcription Factor Staining Buffer Kit (PF00011). Monocytes were gated. This data was developed using the CoraLite® Plus 488 conjugated antibody of 65286-1-Ig. This data was developed using the same antibody clone with 65286-1-PBS in



1X10⁶ LPS and Brefeldin A treated human PBMCs were intracellularly stained with 0.2 ug CoraLite® Plus 488 Anti-Human IL-10 (CL488-65286, Clone:7B8G3) (red) or Mouse IgG2b Isotype Control (blue), or unactivated and Brefeldin A treated human PBMCs were intracellularly stained with 0.2 ug CoraLite® Plus 488 Anti-Human IL-10 (CL488-65286, Clone:7B8G3) (black, dashed line). Cells were fixed and permeabilized with Transcription Factor Staining Buffer Kit (PF00011).