

For Research Use Only

Anti-Human CD44 (F10-44-2) Rabbit IgG Recombinant Antibody, PBS Only



Catalog Number: 65502-1-PBS

Basic Information

Catalog Number: 65502-1-PBS	GenBank Accession Number: BC004372	Purification Method: Affinity purification
Size: 1mg, 1 mg/ml	GeneID (NCBI): 960	CloneNo.: F10-44-2
Source: Rabbit	ENSEMBL Gene ID: ENSG00000026508	
Isotype: IgG	Full Name: CD44 molecule (Indian blood group)	
	Calculated MW: 742 aa, 82 kDa	

Applications

Tested Applications:
FC

Species Specificity:
Human

Background Information

CD44 is a type I transmembrane glycoprotein expressed on embryonic stem cells and in various levels on other cell types including connective tissues and bone marrow. CD44 expression is also upregulated in subpopulations of cancer cells and is recognized as a molecular marker for cancer stem cells (PMID: 29747682). It is a cell-surface receptor that mediates cell-cell and cell-matrix interactions through its affinity for hyaluronic acid (HA) and possibly also through its affinity for other ligands (PMID: 10694938). Adhesion with HA plays an important role in cell migration, tumor growth and progression. CD44 is also involved in lymphocyte activation, recirculation and homing, and in hematopoiesis.

Storage

Storage:
Store at -80°C. Stable for one year after shipment.

Storage Buffer:
PBS only

For technical support and original validation data for this product please contact:

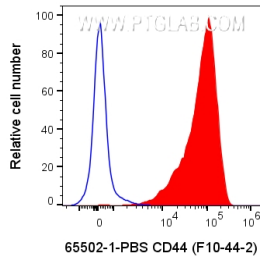
T: 4006900926

E: Proteintech-CN@ptglab.com

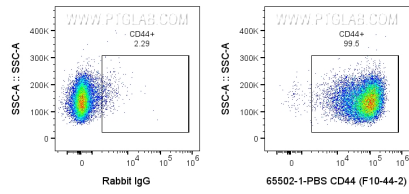
W: ptgcn.com

This product is exclusively available under Proteintech Group brand and is not available to purchase from any other manufacturer.

Selected Validation Data



1x10⁶ human PBMCs were surface stained with 0.1 ug Anti-Human CD44 Rabbit Recombinant Antibody (65502-1-PBS, Clone:F10-44-2) or Rabbit IgG control Rabbit PolyAb and CoraLite®647-Conjugated AffiniPure Goat Anti-Rabbit IgG(H+L) at dilution 1:1000. Cells were not fixed. Lymphocytes were gated.



1x10⁶ human PBMCs were surface stained with 0.1 ug Anti-Human CD44 Rabbit Recombinant Antibody (65502-1-PBS, Clone:F10-44-2) or Rabbit IgG control Rabbit PolyAb and CoraLite®647-Conjugated AffiniPure Goat Anti-Rabbit IgG(H+L) at dilution 1:1000. Cells were not fixed. Lymphocytes were gated.