

For Research Use Only

Anti-Human CD3 (OKT3) Rabbit Recombinant Antibody



Catalog Number: 65504-1-RR

Basic Information

Catalog Number: 65504-1-RR	GenBank Accession Number: BC049847	Purification Method: Affinity purification
Size: 100ug, 0.5 mg/ml	GeneID (NCBI): 916	CloneNo.: OKT3
Source: Rabbit	ENSEMBL Gene ID: ENSG00000198851	
Isotype: IgG	Full Name: CD3e molecule, epsilon (CD3-TCR complex)	
	Calculated MW: 207 aa, 23 kDa	

Applications

Tested Applications:
FC

Species Specificity:
Human

Background Information

CD3 is a multimeric protein associated with the T-cell receptor (TCR) to form a complex involved in antigen recognition and signal transduction (PMID: 15885124). CD3 is composed of CD3 γ , δ , ϵ , and ζ chains (PMID: 1826255). It is expressed by thymocytes in a developmentally regulated manner, T cells, and some NK cells (PMID: 3289580). The TCR recognizes antigens bound to major histocompatibility complex (MHC) molecules. TCR-mediated peptide-MHC recognition is transmitted to the CD3 complex, leading to the intracellular signal transduction (PMID: 11985657).

Storage

Storage:
Store at 2-8°C. Stable for one year after shipment.

Storage Buffer:
PBS with 0.09% sodium azide.

For technical support and original validation data for this product please contact:

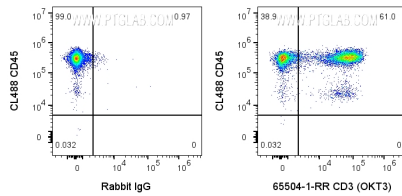
T: 4006900926

E: Proteintech-CN@ptglab.com

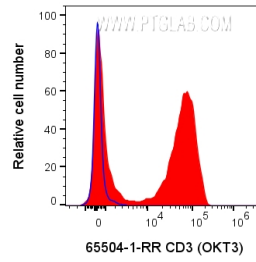
W: ptgcn.com

This product is exclusively available under Proteintech Group brand and is not available to purchase from any other manufacturer.

Selected Validation Data



1X10⁶ human PBMCs were surface stained with 0.2 ug Anti-Human CD3 Rabbit Recombinant Antibody (65504-1-RR, Clone:OKT3) or Rabbit IgG control PolyAb, and CoraLite®647-Conjugated AffiniPure Goat Anti-Rabbit IgG(H+L) at dilution 1:1000. Cells were then stained with CL488 Anti-Human CD45. Cells were not fixed. Lymphocytes were gated.



1X10⁶ human PBMCs were surface stained with 0.2 ug Anti-Human CD3 Rabbit Recombinant Antibody (65504-1-RR, Clone:OKT3) or Rabbit IgG control PolyAb, and CoraLite®647-Conjugated AffiniPure Goat Anti-Rabbit IgG(H+L) at dilution 1:1000. Cells were not fixed. Lymphocytes were gated.