

For Research Use Only

Anti-Human CD8 (UCHT4) Rabbit Recombinant Antibody, PBS only



Catalog Number: 65510-1-PBS

Basic Information

Catalog Number: 65510-1-PBS	GenBank Accession Number: BC025715	Purification Method: Affinity purification
Size: 1mg, 1 mg/ml	GeneID (NCBI): 925	CloneNo.: UCHT4
Source: Rabbit	ENSEMBL Gene ID: ENSG00000153563	
Isotype: IgG	UNIPROT ID: P01732	
	Full Name: CD8a molecule	
	Calculated MW: 235 aa, 26 kDa	

Applications

Tested Applications:
FC

Species Specificity:
Human

Background Information

CD8 is a transmembrane glycoprotein composed of two disulfide-linked chains. It can be present as a homodimer of CD8 α or as a heterodimer of CD8 α and CD8 β (PMID: 3264320; 8253791). CD8 is found on most thymocytes. The majority of class I-restricted T cells express mostly the CD8 $\alpha\beta$ heterodimer while CD8 $\alpha\alpha$ homodimers alone have been found on some gut intraepithelial T cells, on some T cell receptor (TCR) $\gamma\delta$ T cells and on NK cells (PMID: 2111591; 1831127; 8420975). CD8 acts as a co-receptor that binds to MHC class-I and participates in cytotoxic T cell activation (PMID: 8499079). During T cell development, CD8 is required for positive selection of CD4-/CD8+ T cells (PMID: 1968084).

Storage

Storage:
Store at -80°C. Stable for one year after shipment.

Storage Buffer:
PBS only

For technical support and original validation data for this product please contact:

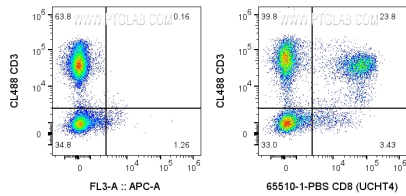
T: 4006900926

E: Proteintech-CN@ptglab.com

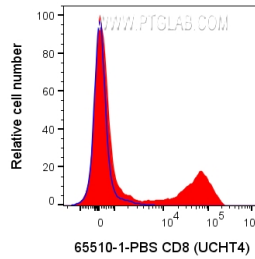
W: ptgcn.com

This product is exclusively available under Proteintech Group brand and is not available to purchase from any other manufacturer.

Selected Validation Data



1x10⁶ human PBMCs were surface stained with 0.1 ug Anti-Human CD8 Rabbit Recombinant Antibody (65510-1-PBS, Clone:UCHT4) or Rabbit IgG control Rabbit PolyAb and CoraLite®647-Conjugated AffiniPure Goat Anti-Rabbit IgG(H+L) at dilution 1:1000. Cells were then stained with CL488 Anti-Human CD3. Cells were not fixed. Lymphocytes were gated.



1x10⁶ human PBMCs were surface stained with 0.1 ug Anti-Human CD8 Rabbit Recombinant Antibody (65510-1-PBS, Clone:UCHT4) or Rabbit IgG control Rabbit PolyAb and CoraLite®647-Conjugated AffiniPure Goat Anti-Rabbit IgG(H+L) at dilution 1:1000. Cells were not fixed. Lymphocytes were gated.