

For Research Use Only

# Anti-Human CD8 (UCHT4) Rabbit Recombinant Antibody



Catalog Number: 65510-1-RR

## Basic Information

<b>Catalog Number:</b> 65510-1-RR	<b>GenBank Accession Number:</b> BC025715	<b>Purification Method:</b> Affinity purification
<b>Size:</b> 100ug, 0.5 mg/mL	<b>GeneID (NCBI):</b> 925	<b>CloneNo.:</b> UCHT4
<b>Source:</b> Rabbit	<b>ENSEMBL Gene ID:</b> ENSG00000153563	
<b>Isotype:</b> IgG	<b>UNIPROT ID:</b> P01732	
	<b>Full Name:</b> CD8a molecule	
	<b>Calculated MW:</b> 235 aa, 26 kDa	

## Applications

**Tested Applications:**  
FC

**Species Specificity:**  
Human

## Background Information

CD8 is a transmembrane glycoprotein composed of two disulfide-linked chains. It can be present as a homodimer of CD8 $\alpha$  or as a heterodimer of CD8 $\alpha$  and CD8 $\beta$  (PMID: 3264320; 8253791). CD8 is found on most thymocytes. The majority of class I-restricted T cells express mostly the CD8 $\alpha\beta$  heterodimer while CD8 $\alpha\alpha$  homodimers alone have been found on some gut intraepithelial T cells, on some T cell receptor (TCR)  $\gamma\delta$  T cells and on NK cells (PMID: 2111591; 1831127; 8420975). CD8 acts as a co-receptor that binds to MHC class-I and participates in cytotoxic T cell activation (PMID: 8499079). During T cell development, CD8 is required for positive selection of CD4-/CD8+ T cells (PMID: 1968084).

## Storage

**Storage:**  
Store at 2-8°C. Stable for one year after shipment.

**Storage Buffer:**  
PBS with 0.09% sodium azide.

For technical support and original validation data for this product please contact:

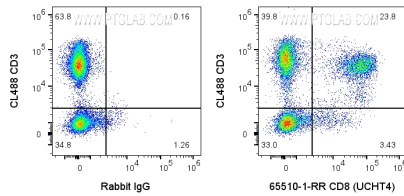
T: 4006900926

E: Proteintech-CN@ptglab.com

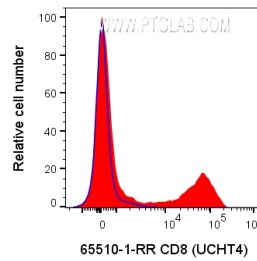
W: ptgcn.com

This product is exclusively available under Proteintech Group brand and is not available to purchase from any other manufacturer.

## Selected Validation Data



1x10<sup>6</sup> human PBMCs were surface stained with 0.1 ug Anti-Human CD8 Rabbit Recombinant Antibody (65510-1-RR, Clone:UCHT4) or Rabbit IgG control Rabbit PolyAb and CoraLite®647-Conjugated AffiniPure Goat Anti-Rabbit IgG(H+L) at dilution 1:1000. Cells were then stained with CL488 Anti-Human CD3. Cells were not fixed. Lymphocytes were gated.



1x10<sup>6</sup> human PBMCs were surface stained with 0.1 ug Anti-Human CD8 Rabbit Recombinant Antibody (65510-1-RR, Clone:UCHT4) or Rabbit IgG control Rabbit PolyAb and CoraLite®647-Conjugated AffiniPure Goat Anti-Rabbit IgG(H+L) at dilution 1:1000. Cells were not fixed. Lymphocytes were gated.