

For Research Use Only

Anti-Human CD11a (TS2/4) Rabbit Recombinant Antibody



Catalog Number: 65518-1-RR

Basic Information

Catalog Number: 65518-1-RR	GenBank Accession Number: BC008777	Purification Method: Affinity purification
Size: 100ug, 0.5 mg/mL	GeneID (NCBI): 3683	CloneNo.: TS2/4
Source: Rabbit	ENSEMBL Gene ID: ENSG00000005844	
Isotype: IgG	UNIPROT ID: P20701	
	Full Name: integrin, alpha L (antigen CD11A (p180), lymphocyte function-associated antigen 1; alpha polypeptide)	
	Calculated MW: 129 kDa	

Applications

Tested Applications:
FC

Species Specificity:
Human

Background Information

CD11a, also known as integrin α L or LFA-1 α , is a 170-180 kDa transmembrane glycoprotein that forms a heterodimer with CD18 (PMID: 7027264; 1672643). CD11a/CD18 (LFA-1) is expressed by all leukocytes and mediates cell adhesion through interactions with its ligands, intercellular adhesion molecule 1 (ICAM-1), ICAM-2, and ICAM-3 (PMID: 7479767). CD11a/CD18 also functions in lymphocyte costimulatory signaling (PMID: 1972160).

Storage

Storage:
Store at 2-8°C. Stable for one year after shipment.

Storage Buffer:
PBS with 0.09% sodium azide.

For technical support and original validation data for this product please contact:

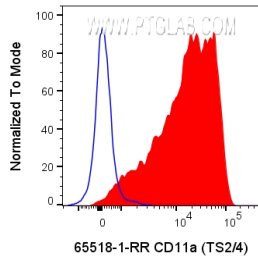
T: 4006900926

E: Proteintech-CN@ptglab.com

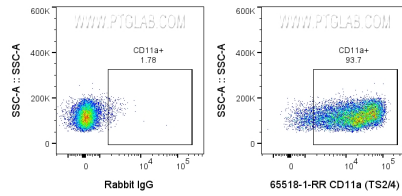
W: ptgcn.com

This product is exclusively available under Proteintech Group brand and is not available to purchase from any other manufacturer.

Selected Validation Data



1x10⁶ human PBMCs were surface stained with 0.2 ug Anti-Human CD11a Rabbit Recombinant Antibody (65518-1-RR, Clone:TS2/4) or Rabbit IgG control Rabbit PolyAb and CoraLite®647-Conjugated AffiniPure Goat Anti-Rabbit IgG(H+L) at dilution 1:1000. Cells were not fixed. Lymphocytes were gated.



1x10⁶ human PBMCs were surface stained with 0.2 ug Anti-Human CD11a Rabbit Recombinant Antibody (65518-1-RR, Clone:TS2/4) or Rabbit IgG control Rabbit PolyAb and CoraLite®647-Conjugated AffiniPure Goat Anti-Rabbit IgG(H+L) at dilution 1:1000. Cells were not fixed. Lymphocytes were gated.