

For Research Use Only

# Anti-Human CD68 (KP1) Mouse IgG1 Recombinant Antibody



Catalog Number: 65521-1-MR

## Basic Information

<b>Catalog Number:</b> 65521-1-MR	<b>GenBank Accession Number:</b> BC015557	<b>Purification Method:</b> Affinity purification
<b>Size:</b> 100ug, 1 mg/mL	<b>GeneID (NCBI):</b> 968	<b>CloneNo.:</b> KP1
<b>Source:</b> Mouse	<b>UNIPROT ID:</b> P34810	
<b>Isotype:</b> IgG1	<b>Full Name:</b> CD68 molecule	
	<b>Calculated MW:</b> 37 kDa	

## Applications

**Tested Applications:**  
FC

**Species Specificity:**  
Human

## Background Information

CD68 is a type I transmembrane glycoprotein that is highly expressed by human monocytes and tissue macrophages. It belongs to the lysosomal/endosomal-associated membrane glycoprotein (LAMP) family and primarily localizes to lysosomes and endosomes with a smaller fraction circulating to the cell surface. CD68 is also a member of the scavenger receptor family. It may play a role in phagocytic activities of tissue macrophages.

## Storage

**Storage:**  
Store at 2-8°C. Stable for one year after shipment.

**Storage Buffer:**  
PBS with 0.09% sodium azide.

For technical support and original validation data for this product please contact:

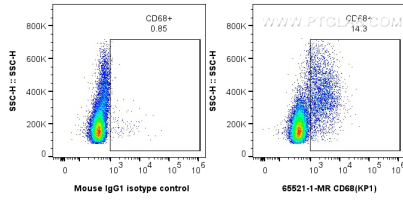
T: 4006900926

E: [Proteintech-CN@ptglab.com](mailto:Proteintech-CN@ptglab.com)

W: [ptgcn.com](http://ptgcn.com)

**This product is exclusively available under Proteintech Group brand and is not available to purchase from any other manufacturer.**

## Selected Validation Data



1x10<sup>6</sup> human PBMCs were intracellularly stained with 0.25 ug Anti-Human CD68 (65521-1-MR, Clone:KP1) or 0.25 ug Mouse IgG1 Isotype Control (MOPC-21) (65124-1-Ig, Clone: MOPC-21), and CoraLite@488-Conjugated AffiniPure Goat Anti-Mouse IgG(H+L) (SA00013-1). Cells were not fixed.