

For Research Use Only

# Anti-Human CD3 (UCHT1) Mouse IgG1 Recombinant Antibody, PBS Only



Catalog Number: **65536-1-PBS**

## Basic Information

<b>Catalog Number:</b> 65536-1-PBS	<b>GenBank Accession Number:</b> BC049847	<b>Purification Method:</b> Affinity purification
<b>Size:</b> 1mg, 2 mg/ml	<b>GeneID (NCBI):</b> 916	<b>CloneNo.:</b> UCHT1
<b>Source:</b> Mouse	<b>ENSEMBL Gene ID:</b> ENSG00000198851	
<b>Isotype:</b> IgG1	<b>Full Name:</b> CD3e molecule, epsilon (CD3-TCR complex)	
	<b>Calculated MW:</b> 207 aa, 23 kDa	

## Applications

**Tested Applications:**  
FC

**Species Specificity:**  
Human

## Background Information

CD3 is a multimeric protein associated with the T-cell receptor (TCR) to form a complex involved in antigen recognition and signal transduction (PMID: 15885124). CD3 is composed of CD3 $\gamma$ ,  $\delta$ ,  $\epsilon$ , and  $\zeta$  chains (PMID: 1826255). It is expressed by thymocytes in a developmentally regulated manner, T cells, and some NK cells (PMID: 3289580). The TCR recognizes antigens bound to major histocompatibility complex (MHC) molecules. TCR-mediated peptide-MHC recognition is transmitted to the CD3 complex, leading to the intracellular signal transduction (PMID: 11985657).

## Storage

**Storage:**  
Store at -80°C. Stable for one year after shipment.  
**Storage Buffer:**  
PBS only

For technical support and original validation data for this product please contact:

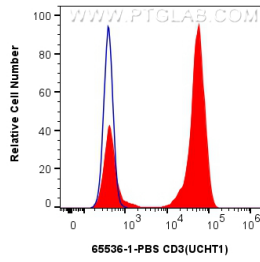
T: 4006900926

E: [Proteintech-CN@ptglab.com](mailto:Proteintech-CN@ptglab.com)

W: [ptgcn.com](http://ptgcn.com)

**This product is exclusively available under Proteintech Group brand and is not available to purchase from any other manufacturer.**

## Selected Validation Data



1x10<sup>6</sup> human PBMCs were surface stained with 0.25 ug Anti-Human CD3 (65536-1-PBS, Clone: UCHT1) and CoraLite@488-Conjugated AffiniPure Goat Anti-Mouse IgG(H+L) (SA00013-1) (red), or 0.25 ug Isotype Control and CoraLite@488-Conjugated AffiniPure Goat Anti-Mouse IgG(H+L) (SA00013-1) (blue). Cells were not fixed.