

For Research Use Only

Anti-Human CD163 (GHI/61) Mouse IgG2a Recombinant Antibody



Catalog Number: 65561-1-MR

Basic Information

| | | |
|--------------------------------------|--|---|
| Catalog Number: 65561-1-MR | GenBank Accession Number: BC051281 | Purification Method: Protein A purification |
| Size: 100ug, 1 mg/ml | GeneID (NCBI): 9332 | CloneNo.: GHI/61 |
| Source: Mouse | ENSEMBL Gene ID: ENSG00000177575 | |
| Isotype: IgG2a | UNIPROT ID: Q86VB7 | |
| | Full Name: CD163 molecule | |
| | Calculated MW: 1156 aa, 125 kDa | |

Applications

Tested Applications:
FC

Species Specificity:
Human

Background Information

CD163, also known as M130, is a membrane glycoprotein that belongs to the scavenger receptor superfamily (PMID: 8370408). It is an acute phase-regulated and signal-inducing macrophage protein expressed exclusively in monocytes and tissue macrophages (PMID: 11196644). CD163 mediates endocytosis of haptoglobin-haemoglobin complexes (PMID: 11196644). The uptake of haptoglobin by macrophages contributes to the recycling of iron and also to the inflammatory response (PMID: 22900885). Soluble CD163 (sCD163), as a result of ectodomain shedding during inflammatory activation of macrophages, circulates in blood and has been suggested as a plasma/serum marker for macrophage activity (PMID: 12570164).

Storage

Storage:
Store at 2-8°C. Stable for one year after shipment.

Storage Buffer:
PBS with 0.09% sodium azide.

For technical support and original validation data for this product please contact:

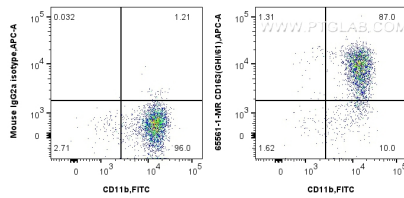
T: 4006900926

E: Proteintech-CN@ptglab.com

W: ptgcn.com

This product is exclusively available under Proteintech Group brand and is not available to purchase from any other manufacturer.

Selected Validation Data



1x10⁶ human PBMCs were surface stained with 0.5 ug Anti-Human CD163 Mouse Recombinant Antibody (65561-1-MR, Clone: GH1/61) or 0.5 ug Mouse IgG2a Isotype (65208-1-Ig, Clone: C1.18.4) and CoraLite®647-Conjugated AffiniPure Goat Anti-Mouse IgG(H+L). Cells were then stained with FITC Anti-Human CD11b. Cells were incubated with FC Receptor Block prior to staining. Cells were not fixed. Monocytes were gated.