

For Research Use Only

# Anti-Human CD163 (GHI/61) Mouse IgG2a Recombinant Antibody, PBS Only



Catalog Number: **65561-1-PBS**

## Basic Information

<b>Catalog Number:</b> 65561-1-PBS	<b>GenBank Accession Number:</b> BC051281	<b>Purification Method:</b> Protein A purification
<b>Size:</b> 1mg, 2 mg/ml	<b>GeneID (NCBI):</b> 9332	<b>CloneNo.:</b> GHI/61
<b>Source:</b> Mouse	<b>ENSEMBL Gene ID:</b> ENSG00000177575	
<b>Isotype:</b> IgG2a	<b>UNIPROT ID:</b> Q86VB7	
	<b>Full Name:</b> CD163 molecule	
	<b>Calculated MW:</b> 1156 aa, 125 kDa	

## Applications

**Tested Applications:**  
FC

**Species Specificity:**  
Human

## Background Information

CD163, also known as M130, is a membrane glycoprotein that belongs to the scavenger receptor superfamily (PMID: 8370408). It is an acute phase-regulated and signal-inducing macrophage protein expressed exclusively in monocytes and tissue macrophages (PMID: 11196644). CD163 mediates endocytosis of haptoglobin-haemoglobin complexes (PMID: 11196644). The uptake of haptoglobin by macrophages contributes to the recycling of iron and also to the inflammatory response (PMID: 22900885). Soluble CD163 (sCD163), as a result of ectodomain shedding during inflammatory activation of macrophages, circulates in blood and has been suggested as a plasma/serum marker for macrophage activity (PMID: 12570164).

## Storage

**Storage:**  
Store at -80°C. Stable for one year after shipment.  
**Storage Buffer:**  
PBS Only

For technical support and original validation data for this product please contact:

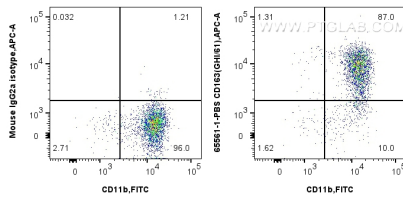
T: 4006900926

E: [Proteintech-CN@ptglab.com](mailto:Proteintech-CN@ptglab.com)

W: [ptgcn.com](http://ptgcn.com)

**This product is exclusively available under Proteintech Group brand and is not available to purchase from any other manufacturer.**

## Selected Validation Data



1x10<sup>6</sup> human PBMCs were surface stained with 0.5 ug Anti-Human CD163 Mouse Recombinant Antibody, PBS Only (65561-1-PBS, Clone: GHI/61) or 0.5 ug Mouse IgG2a Isotype (65208-1-Ig, Clone: C.1.18.4) and CoraLite®647-Conjugated AffiniPure Goat Anti-Mouse IgG(H+L). Cells were then stained with FITC Anti-Human CD11b. Cells were incubated with FC Receptor Block prior to staining. Cells were not fixed. Monocytes were gated.