

For Research Use Only

# Anti-Human CD11a (TS2/4) Mouse IgG2a Recombinant Antibody



Catalog Number: 65563-1-MR

## Basic Information

**Catalog Number:**

65563-1-MR

**Size:**

100ug, 1000  $\mu$ g/ml

**Source:**

Mouse

**Isotype:**

IgG2a

**GenBank Accession Number:**

BC008777

**GeneID (NCBI):**

3683

**ENSEMBL Gene ID:**

ENSG00000005844

**UNIPROT ID:**

P20701

**Full Name:**

integrin, alpha L (antigen CD11A (p180), lymphocyte function-associated antigen 1; alpha polypeptide)

**Calculated MW:**

129 kDa

**Purification Method:**

Protein A purification

**CloneNo.:**

TS2/4

## Applications

**Tested Applications:**

FC

**Species Specificity:**

Human

## Background Information

CD11a, also known as integrin  $\alpha$  L or LFA-1  $\alpha$ , is a 170-180 kDa transmembrane glycoprotein that forms a heterodimer with CD18 (PMID: 7027264; 1672643). CD11a/CD18 (LFA-1) is expressed by all leukocytes and mediates cell adhesion through interactions with its ligands, intercellular adhesion molecule 1 (ICAM-1), ICAM-2, and ICAM-3 (PMID: 7479767). CD11a/CD18 also functions in lymphocyte costimulatory signaling (PMID: 1972160).

## Storage

**Storage:**

Store at 2-8°C. Stable for one year after shipment.

**Storage Buffer:**

PBS with 0.09% sodium azide.

For technical support and original validation data for this product please contact:

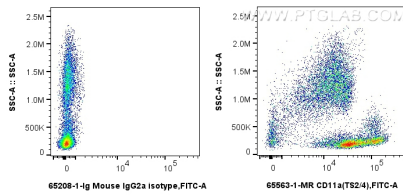
T: 4006900926

E: [Proteintech-CN@ptglab.com](mailto:Proteintech-CN@ptglab.com)

W: [ptgcn.com](http://ptgcn.com)

This product is exclusively available under Proteintech Group brand and is not available to purchase from any other manufacturer.

## Selected Validation Data



1x10<sup>6</sup> human peripheral blood leukocytes were surface stained with 0.25  $\mu$ g Anti-Human CD11a Mouse IgG2a Recombinant Antibody (65563-1-MR, Clone: TS2/4) or Mouse IgG2a Isotype Control (65208-1-Ig, Clone: C1.18.4), and CoraLite<sup>®</sup>488-Conjugated AffiniPure Donkey Anti-Mouse IgG(H+L). Cells were incubated with FC Receptor Block prior to staining. Cells were not fixed.