

For Research Use Only

Anti-Human CD2 (TS1/8) Mouse IgG2a Recombinant Antibody, PBS Only



Catalog Number: **65565-1-PBS**

Basic Information

Catalog Number: 65565-1-PBS	GenBank Accession Number: BC033583	Purification Method: Protein A purification
Size: 1mg, 2 mg/ml	GeneID (NCBI): 914	CloneNo.: TS1/8
Source: Mouse	ENSEMBL Gene ID: ENSG00000116824	
Isotype: IgG2a	Full Name: CD2 molecule	
	Calculated MW: 351 aa, 39 kDa	

Applications

Tested Applications:
FC

Species Specificity:
Human

Background Information

CD2 is a cell surface glycoprotein present on a majority of thymocytes, all mature T cells and subset of NK cells but not on B lymphocytes. It is a pan T-cell marker. CD2 interacts with lymphocyte function-associated antigen (LFA-3/CD58) and CD48/BCM1 to mediate adhesion between T-cells and other cell types. CD2 is implicated in the triggering of T-cells, the cytoplasmic domain is implicated in the signaling function.

Storage

Storage:
Store at -80°C. Stable for one year after shipment.

Storage Buffer:
PBS Only

For technical support and original validation data for this product please contact:

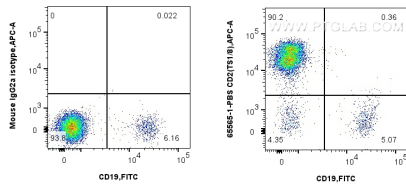
T: 4006900926

E: Proteintech-CN@ptglab.com

W: ptgcn.com

This product is exclusively available under Proteintech Group brand and is not available to purchase from any other manufacturer.

Selected Validation Data



1x10⁶ human PBMCs were surface stained with 0.125 ug Anti-Human CD2 (TS1/8) Mouse IgG2a Recombinant Antibody, PBS Only (65565-1-PBS, Clone:TS1/8) , or Mouse IgG2a Isotype Control (C1.18.4) (65208-1-Ig, Clone: C1.18.4) and CoraLite@647-conjugated AffiniPure F(ab')₂ Fragment Goat Anti-Mouse IgG (H+L) (SA00014-8). Cells were then stained with FITC Plus Anti-Human CD19. Cells were not fixed. Lymphocytes were gated.