

For Research Use Only

Anti-Human CD64 (10.1) Mouse IgG2a Recombinant Antibody



Catalog Number: 65572-1-MR

Basic Information

Catalog Number: 65572-1-MR	GenBank Accession Number: BC032634	Purification Method: Protein A purification
Size: 100ug, 1000 µg/ml	GeneID (NCBI): 2209	CloneNo.: 10.1
Source: Mouse	ENSEMBL Gene ID: ENSG00000150337	
Isotype: IgG2a	Full Name: Fc fragment of IgG, high affinity Ia, receptor (CD64)	
	Calculated MW: 374 aa, 43 kDa	

Applications

Tested Applications:
FC

Species Specificity:
Human

Background Information

Fc γ receptors comprise a multigene family of integral membrane glycoproteins that exhibit complex activation or inhibitory effects on cell functions after aggregation by complexed immunoglobulin G (IgG) (PMID: 17005690). CD64, also known as Fc γ R1A, is a high-affinity receptor for the Fc region of IgG. It is expressed by monocytes/macrophages, activated neutrophils, dendritic cells, and early myeloid cells (PMID: 23293080; 19642859; 7680917). CD64 functions in both innate and adaptive immune responses.

Storage

Storage:
Store at 2-8°C. Stable for one year after shipment.

Storage Buffer:
PBS with 0.09% sodium azide.

For technical support and original validation data for this product please contact:

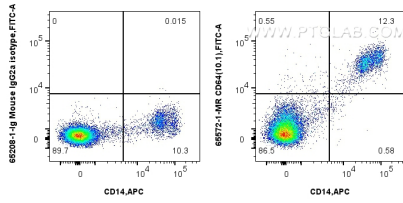
T: 4006900926

E: Proteintech-CN@ptglab.com

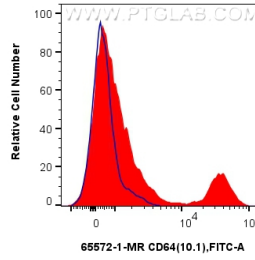
W: ptgcn.com

This product is exclusively available under Proteintech Group brand and is not available to purchase from any other manufacturer.

Selected Validation Data



1x10⁶ human PBMCs were surface stained with 0.25 ug Anti-Human CD64 Mouse IgG2a Recombinant Antibody (65572-1-MR, Clone: 10.1) or 0.25 ug Mouse IgG2a Isotype Control (65208-1-Ig, Clone: C1.18.4) and CoraLite®488-Conjugated AffiniPure Donkey Anti-Mouse IgG(H+L). Cells were then stained with APC Anti-Human CD14. Cells were incubated with FC Receptor Block prior to staining. Cells were not fixed.



1x10⁶ human PBMCs were surface stained with 0.25 ug Anti-Human CD64 Mouse IgG2a Recombinant Antibody (65572-1-MR, Clone: 10.1) (red) or Mouse IgG2a Isotype Control (65208-1-Ig, Clone: C1.18.4) (blue), and CoraLite®488-Conjugated AffiniPure Donkey Anti-Mouse IgG(H+L). Cells were incubated with FC Receptor Block prior to staining. Cells were not fixed.