

For Research Use Only

Anti-Human CD26 (BA5b) Mouse IgG2a Recombinant Antibody



Catalog Number: 65574-1-MR

Basic Information

Catalog Number: 65574-1-MR	GenBank Accession Number: BC013329	Purification Method: Protein A purification
Size: 100ug, 1000 µg/ml	GeneID (NCBI): 1803	CloneNo.: BA5b
Source: Mouse	Full Name: dipeptidyl-peptidase 4	
Isotype: IgG2a	Calculated MW: 88 kDa	

Applications

Tested Applications:
FC

Species Specificity:
Human

Background Information

CD26, also known as DPP4 (dipeptidyl peptidase-4), is a 110 kDa type II cell-surface glycoprotein widely expressed on T cells, activated B cells, activated NK cells and myeloid cells as well as on epithelial cells, fibroblasts, mesothelium, and endothelial cells of a variety of tissues (PMID:33777580; 26919392). It has ecto-enzyme activity in its extracellular domain and cleaves amino-terminal dipeptides with either L-proline or L-alanine at the penultimate position (PMID: 9553764). CD26 plays roles in diverse biological processes such as immunoregulation, glucose homeostasis, and tumorigenesis (PMID: 33777580).

Storage

Storage:
Store at 2-8°C. Stable for one year after shipment.

Storage Buffer:
PBS with 0.09% sodium azide.

For technical support and original validation data for this product please contact:

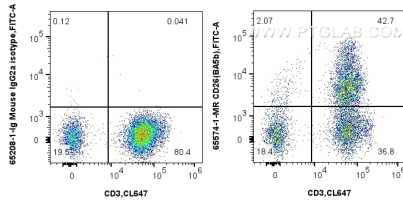
T: 4006900926

E: Proteintech-CN@ptglab.com

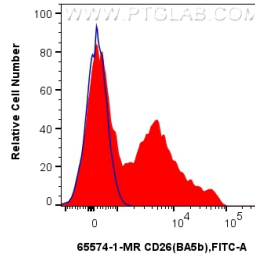
W: ptgcn.com

This product is exclusively available under Proteintech Group brand and is not available to purchase from any other manufacturer.

Selected Validation Data



1x10⁶ human PBMCs were surface stained with 0.25 ug Anti-Human CD26 Mouse IgG2a Recombinant Antibody (65574-1-MR, Clone: BA5b) or Mouse IgG2a Isotype Control (65208-1-Ig, Clone: C1.18.4) and CoraLite® 488-Conjugated AffiniPure Donkey Anti-Mouse IgG(H+L). Cells were then stained with CoraLite® Plus 647 Anti-Human CD3. Cells were not fixed. Lymphocytes were gated.



1x10⁶ human PBMCs were surface stained with 0.25 ug Anti-Human CD26 Mouse IgG2a Recombinant Antibody (65574-1-MR, Clone: BA5b) (red) or Mouse IgG2a Isotype Control (65208-1-Ig, Clone: C1.18.4) (blue) and CoraLite® 488-Conjugated AffiniPure Donkey Anti-Mouse IgG(H+L). Cells were not fixed. Lymphocytes were gated.