

For Research Use Only

# Anti-Human CD42b (AK2) Mouse IgG2a Recombinant Antibody



Catalog Number: 65588-1-MR

## Basic Information

<b>Catalog Number:</b> 65588-1-MR	<b>GenBank Accession Number:</b> BC027955	<b>Purification Method:</b> Protein A purification
<b>Size:</b> 100ug, 1 mg/ml	<b>GeneID (NCBI):</b> 2811	<b>CloneNo.:</b> AK2
<b>Source:</b> Mouse	<b>ENSEMBL Gene ID:</b> ENSG00000185245	
<b>Isotype:</b> IgG2a	<b>Full Name:</b> glycoprotein Ib (platelet), alpha polypeptide	
	<b>Calculated MW:</b> 626 aa, 69 kDa	

## Applications

**Tested Applications:**  
FC

**Species Specificity:**  
Human

## Background Information

CD42b, also known as platelet glycoprotein Ib alpha chain (GPIb alpha), is a type I transmembrane glycoprotein of 135-145 kDa (PMID: 2656709). It is expressed on platelets and megakaryocytes. CD42b and CD42c (GPIb beta) are linked by a disulphide bond to form GPIb (PMID: 7660135). GPIb forms a noncovalent complex with CD42a (GPIIX) and CD42d (GPV) and acts as a receptor for von Willebrand factor (vWF) and thrombin (PMID: 7660135; 3759960). The GPIb-V-IX complex mediates vWF-dependent platelet adhesion to blood vessels. Defects in the expression of CD42b result in Bernard-Soulier syndromes and platelet-type von Willebrand disease (PMID: 9371310).

## Storage

**Storage:**  
Store at 2-8°C. Stable for one year after shipment.

**Storage Buffer:**  
PBS with 0.09% sodium azide.

For technical support and original validation data for this product please contact:

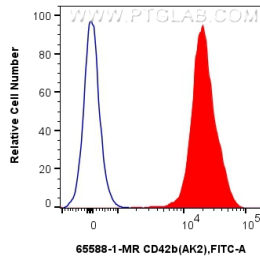
T: 4006900926

E: [Proteintech-CN@ptglab.com](mailto:Proteintech-CN@ptglab.com)

W: [ptgcn.com](http://ptgcn.com)

**This product is exclusively available under Proteintech Group brand and is not available to purchase from any other manufacturer.**

## Selected Validation Data



1x10<sup>6</sup> human peripheral blood platelets were surface stained with 0.25 ug Anti-Human CD42b Mouse IgG2a Recombinant Antibody (65588-1-MR, Clone: AK2) (red) or Mouse IgG2a Isotype Control (65208-1-Ig, Clone: C1.18.4) (blue) and CoraLite®488-Conjugated AffiniPure Donkey Anti-Mouse IgG(H+L). Cells were not fixed.