

For Research Use Only

# Anti-Human CD86 (BU63) Mouse IgG2a Recombinant Antibody, PBS Only

Catalog Number: 65592-1-PBS



## Basic Information

Catalog Number:

65592-1-PBS

Size:

1mg, 2 mg/ml

Source:

Mouse

Isotype:

IgG2a

GenBank Accession Number:

BC040261

GeneID (NCBI):

942

ENSEMBL Gene ID:

ENSG00000114013

Full Name:

CD86 molecule

Calculated MW:

329 aa, 38 kDa

Purification Method:

Protein A purification

CloneNo.:

BU63

## Applications

Tested Applications:

FC

Species Specificity:

human

## Background Information

CD86 (also known as B7.2) is a costimulatory molecule belonging to the immunoglobulin superfamily. Primarily expressed on antigen-presenting cells (APCs), including B cells, dendritic cells, and macrophages, CD86 is the ligand for two proteins at the cell surface of T cells, CD28 antigen and cytotoxic T-lymphocyte-associated protein 4. Binding of CD86 with CD28 antigen is a costimulatory signal for activation of the T-cell. Binding of CD86 with cytotoxic T-lymphocyte-associated protein 4 negatively regulates T-cell activation and diminishes the immune response.

## Storage

Storage:

Store at -80°C.

**The product is shipped with ice packs. Upon receipt, store it immediately at -80°C**

Storage Buffer:

PBS Only

For technical support and original validation data for this product please contact:

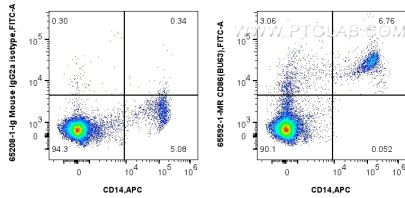
T: 4006900926

E: [Proteintech-CN@ptglab.com](mailto:Proteintech-CN@ptglab.com)

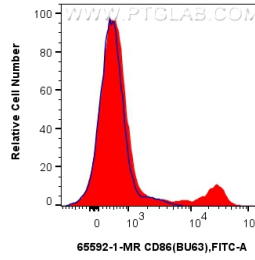
W: [ptgcn.com](http://ptgcn.com)

**This product is exclusively available under Proteintech Group brand and is not available to purchase from any other manufacturer.**

## Selected Validation Data



1x10<sup>6</sup> human PBMCs were surface stained with 0.25 ug Anti-Human CD86 Mouse IgG2a Recombinant Antibody (65592-1-MR, Clone: BU63) or Mouse IgG2a Isotype Control (65208-1-Ig, Clone: C1.18.4) and CoraLite®488-Conjugated AffiniPure Donkey Anti-Mouse IgG(H+L). Cells were then stained with APC Anti-Human CD14. Cells were incubated with FC Receptor Block prior to staining. Cells were not fixed. This data was developed using the same antibody clone with 65592-1-PBS in a



1x10<sup>6</sup> human PBMCs were surface stained with 0.25 ug Anti-Human CD86 Mouse IgG2a Recombinant Antibody (65592-1-MR, Clone:BU63) (red) or Mouse IgG2a Isotype Control (65208-1-Ig, Clone: C1.18.4) (blue) and CoraLite®488-Conjugated AffiniPure Donkey Anti-Mouse IgG(H+L). Cells were incubated with FC Receptor Block prior to staining. Cells were not fixed. This data was developed using the same antibody clone with 65592-1-PBS in a different storage buffer

