

For Research Use Only

Anti-Human CD68 (KP1) Mouse IgG2a Recombinant Antibody, PBS Only

Catalog Number: 65593-1-PBS



Basic Information

Catalog Number:

65593-1-PBS

Size:

1mg, 2 mg/ml

Source:

Mouse

Isotype:

IgG2a

GenBank Accession Number:

BC015557

GeneID (NCBI):

968

Full Name:

CD68 molecule

Calculated MW:

37 kDa

Purification Method:

Protein A purification

CloneNo.:

KP1

Applications

Tested Applications:

FC (Intra)

Species Specificity:

human

Background Information

CD68 is a type I transmembrane glycoprotein that is highly expressed by human monocytes and tissue macrophages. It belongs to the lysosomal/endosomal-associated membrane glycoprotein (LAMP) family and primarily localizes to lysosomes and endosomes with a smaller fraction circulating to the cell surface. CD68 is also a member of the scavenger receptor family. It may play a role in phagocytic activities of tissue macrophages.

Storage

Storage:

Store at -80°C.

The product is shipped with ice packs. Upon receipt, store it immediately at -80°C

Storage Buffer:

PBS Only

For technical support and original validation data for this product please contact:

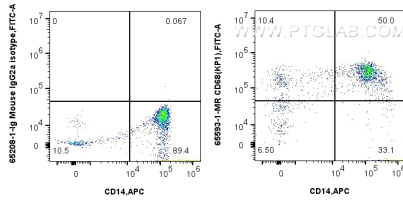
T: 4006900926

E: Proteintech-CN@ptglab.com

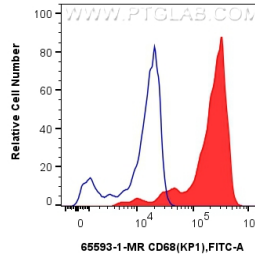
W: ptgcn.com

This product is exclusively available under Proteintech Group brand and is not available to purchase from any other manufacturer.

Selected Validation Data



1x10⁶ human PBMCs were intracellularly stained with 0.25 ug Anti-Human CD68 Mouse IgG2a Recombinant Antibody (65593-1-MR, Clone: KP1) or Mouse IgG2a Isotype Control (65208-1-Ig, Clone: C1.18.4) and CoraLite®488-Conjugated AffiniPure Donkey Anti-Mouse IgG(H+L). Cells were then stained with APC Anti-Human CD14. Cells were incubated with FC Receptor Block prior to fixing and staining. Cells were fixed with 4% PFA and permeabilized with Flow Cytometry



1x10⁶ human PBMCs were intracellularly stained with 0.25 ug Anti-Human CD68 Mouse IgG2a Recombinant Antibody (65593-1-MR, Clone: KP1) (red) or Mouse IgG2a Isotype Control (65208-1-Ig, Clone: C1.18.4) (blue) and CoraLite®488-Conjugated AffiniPure Donkey Anti-Mouse IgG(H+L). Cells were incubated with FC Receptor Block prior to fixing and staining. Cells were fixed with 4% PFA and permeabilized with Flow Cytometry Perm Buffer (PF00011-C). Monocytes were