

For Research Use Only

Anti-Human CD11c (BU15) Mouse IgG2a Recombinant Antibody, PBS Only

Catalog Number: 65600-1-PBS



Basic Information

Catalog Number:

65600-1-PBS

Size:

1mg, 2 mg/ml

Source:

Mouse

Isotype:

IgG2a

GenBank Accession Number:

BC038237

GeneID (NCBI):

3687

ENSEMBL Gene ID:

ENSG00000140678

Full Name:

integrin, alpha X (complement component 3 receptor 4 subunit)

Calculated MW:

1169 aa, 129 kDa

Purification Method:

Protein A purification

CloneNo.:

BU15

Applications

Tested Applications:

FC

Species Specificity:

human

Background Information

Integrins are cell adhesion receptors that are heterodimers composed of non-covalently associated α and β subunits (PMID: 9779984). CD11c, also known as integrin αX , is a type I transmembrane glycoprotein present on a variety of cells, including monocytes/macrophages, granulocytes, a subset of B cells, NK cells and dendritic cells (PMID: 2897326; 1680915; 1694698; 17389580). As a result of its high level of expression on most dendritic cells, CD11c is typically considered to be a marker of conventional dendritic cells (PMID: 27119555). CD11c forms an α / β heterodimer with CD18 (integrin $\beta 2$). CD11c/CD18 acts as a receptor for fibrinogen and is important in monocyte adhesion and chemotaxis (PMID: 1671533).

Storage

Storage:

Store at -80°C .

The product is shipped with ice packs. Upon receipt, store it immediately at -80°C

Storage Buffer:

PBS Only

For technical support and original validation data for this product please contact:

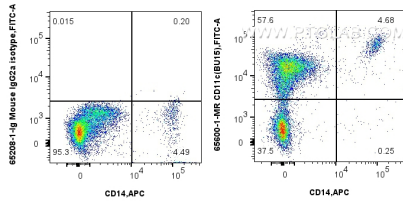
T: 4006900926

E: Proteintech-CN@ptglab.com

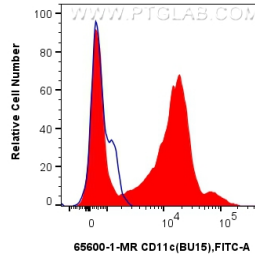
W: ptgcn.com

This product is exclusively available under Proteintech Group brand and is not available to purchase from any other manufacturer.

Selected Validation Data



1x10⁶ human peripheral blood leukocyte were surface stained with 0.25 ug Anti-Human CD11c Mouse IgG2a Recombinant Antibody (65600-1-MR, Clone: BU15) or Mouse IgG2a Isotype Control (65208-1-Ig, Clone: C1.18.4) and CoraLite®488-Conjugated AffiniPure Donkey Anti-Mouse IgG(H+L). Cells were then stained with APC Anti-Human CD14. Cells were incubated with FC Receptor Block prior to staining. Cells were not fixed. This data was developed using the same antibody clone.



1x10⁶ human peripheral blood leukocyte were surface stained with 0.25 ug Anti-Human CD11c Mouse IgG2a Recombinant Antibody (65600-1-MR, Clone: BU15) (red) or Mouse IgG2a Isotype Control (65208-1-Ig, Clone: C1.18.4) (blue) and CoraLite®488-Conjugated AffiniPure Donkey Anti-Mouse IgG(H+L). Cells were incubated with FC Receptor Block prior to staining. Cells were not fixed. This data was developed using the same antibody clone with 65600-1-PBS in a different storage buffer.