

For Research Use Only

# Anti-Human CD29 (TS2/16) Mouse IgG2a Recombinant Antibody, PBS Only

Catalog Number: 65601-1-PBS



## Basic Information

**Catalog Number:**

65601-1-PBS

**Size:**

1mg, 2 mg/ml

**Source:**

Mouse

**Isotype:**

IgG2a

**GenBank Accession Number:**

BC020057

**GeneID (NCBI):**

3688

**ENSEMBL Gene ID:**

ENSG00000150093

**Full Name:**

integrin, beta 1 (fibronectin receptor, beta polypeptide, antigen CD29 includes MDF2, MSK12)

**Calculated MW:**

88 kDa

**Purification Method:**

Protein A purification

**CloneNo.:**

TS2/16

## Applications

**Tested Applications:**

FC

**Species Specificity:**

human

## Background Information

Integrin beta-1 (ITGB1), also named as CD29, is a 130 kDa single chain type I glycoprotein that is expressed in a heterodimeric complex with one of six distinct  $\alpha$  subunits, comprising the very late activation antigen (VLA) subfamily of adhesion receptors. It is one of the essential surface molecules expressed on human MSC from bone marrow and other sources. The  $\beta$  1 subunit is also broadly expressed on lymphocytes and monocytes, weakly expressed on granulocytes, and not expressed on erythrocytes. These receptors are involved in a variety of cell-cell and cell-matrix interactions.

## Storage

**Storage:**

Store at  $-80^{\circ}\text{C}$ .

**The product is shipped with ice packs. Upon receipt, store it immediately at  $-80^{\circ}\text{C}$**

**Storage Buffer:**

PBS Only

For technical support and original validation data for this product please contact:

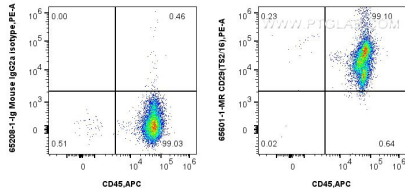
T: 4006900926

E: [Proteintech-CN@ptglab.com](mailto:Proteintech-CN@ptglab.com)

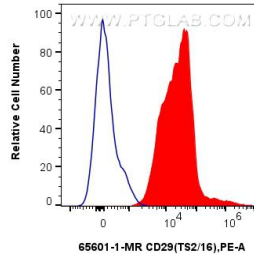
W: [ptgcn.com](http://ptgcn.com)

**This product is exclusively available under Proteintech Group brand and is not available to purchase from any other manufacturer.**

## Selected Validation Data



1x10<sup>6</sup> human PBMCs were surface stained with 0.25 ug Anti-Human CD29 (TS2/16) Mouse IgG2a RecAb (65601-1-MR, Clone: TS2/16) or 0.25 ug Mouse IgG2a Isotype Control (C1.18.4) (65208-1-Ig, Clone: C1.18.4), and PE-conjugated Goat Anti-Mouse IgG. Cells were then stained with APC Anti-Human CD45. Cells were incubated with FC Receptor Block prior to staining. Cells were not fixed. This data was developed using the same antibody clone with 65601-1-PBS in a



1x10<sup>6</sup> human PBMCs were surface stained with 0.25 ug Anti-Human CD29 (TS2/16) Mouse IgG2a RecAb (65601-1-MR, Clone: TS2/16) (red) or 0.25 ug Mouse IgG2a Isotype Control (C1.18.4) (65208-1-Ig, Clone: C1.18.4) (blue), and PE-conjugated Goat Anti-Mouse IgG. Cells were incubated with FC Receptor Block prior to staining. Cells were not fixed. This data was developed using the same antibody clone with 65601-1-PBS in a different storage buffer formulation.

