

For Research Use Only

Anti-Human CD31 (WM-59) Mouse IgG2a Recombinant Antibody

Catalog Number: 65614-1-MR



Basic Information

Catalog Number: 65614-1-MR	GenBank Accession Number: BC022512	Purification Method: Protein A purification
Size: 100ug, 1000 µg/ml	GeneID (NCBI): 5175	CloneNo.: WM-59
Source: Mouse	ENSEMBL Gene ID: ENSG00000261371	
Isotype: IgG2a	Full Name: platelet/endothelial cell adhesion molecule	
	Calculated MW: 83 kDa	

Applications

Tested Applications:
FC

Species Specificity:
human

Background Information

CD31, also known as PECAM1 (Platelet endothelial cell adhesion molecule), is a member of the immunoglobulin gene superfamily of cell adhesion molecules. CD31 is a transmembrane glycoprotein that is highly expressed on the surface of the endothelium, making up a large portion of its intracellular junctions. It is also present on the surface of hematopoietic cells and immune cells including platelets, monocytes, neutrophils, natural killer cells, megakaryocytes and some types of T-cell (PMID: 9011572). As well as its role in cell-cell adhesion, CD31 functions as a signaling receptor, and is involved in important physiological events such as nitric oxide production, regulation of T-cell immunity and tolerance, leukocyte transendothelial migration and inflammation and angiogenesis (PMID: 21183735; 20978210; 17872453; 20634489).

Storage

Storage:
Store at 2-8°C. Stable for one year after shipment.

Storage Buffer:
PBS with 0.09% sodium azide.

For technical support and original validation data for this product please contact:

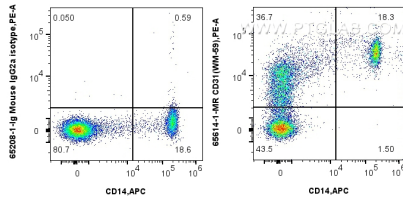
T: 4006900926

E: Proteintech-CN@ptglab.com

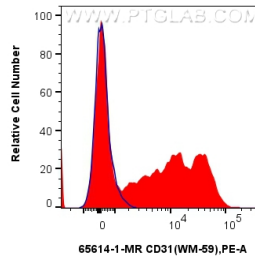
W: ptgcn.com

This product is exclusively available under Proteintech Group brand and is not available to purchase from any other manufacturer.

Selected Validation Data



1x10⁶ human PBMCs were surface stained with 0.25 ug Anti-Human CD31 (WM-59) Mouse IgG2a Recombinant Antibody (65614-1-MR, Clone: WM-59) or Mouse IgG2a Isotype Control (C1.18.4) (65208-1-Ig, Clone: C1.18.4) and PE-conjugated Goat Anti-Mouse IgG. Cells were then stained with APC Anti-Human CD14. Cells were incubated with FC Receptor Block prior to staining. Cells were not fixed.



1x10⁶ human PBMCs were surface stained with 0.25 ug Anti-Human CD31 (WM-59) Mouse IgG2a Recombinant Antibody (65614-1-MR, Clone: WM-59) (red) or Mouse IgG2a Isotype Control (C1.18.4) (65208-1-Ig, Clone: C1.18.4) (blue) and PE-conjugated Goat Anti-Mouse IgG. Cells were incubated with FC Receptor Block prior to staining. Cells were not fixed.