

For Research Use Only

Anti-Human CD14 (26IC) Mouse IgG2a Recombinant Antibody, PBS Only

Catalog Number: 65616-1-PBS



Basic Information

Catalog Number:

65616-1-PBS

Size:

1mg, 2 mg/ml

Source:

Mouse

Isotype:

IgG2a

GenBank Accession Number:

BC010507

GeneID (NCBI):

929

ENSEMBL Gene ID:

ENSG00000170458

Full Name:

CD14 molecule

Calculated MW:

375 aa, 40 kDa

Purification Method:

Protein A purification

CloneNo.:

26IC

Applications

Tested Applications:

FC

Species Specificity:

human

Background Information

CD14 is a 50-55 kDa glycosylphosphatidylinositol-anchored glycoprotein preferentially expressed on monocytes and macrophages, and at lower levels on granulocytes (PMID: 3385210; 2462937; 7685797). CD14 can also exist as a soluble protein. CD14 acts as a co-receptor for bacterial liposaccharides (LPS) (PMID: 1698311). It plays a major role in the inflammatory response of monocytes to LPS.

Storage

Storage:

Store at -80°C.

The product is shipped with ice packs. Upon receipt, store it immediately at -80°C

Storage Buffer:

PBS Only

For technical support and original validation data for this product please contact:

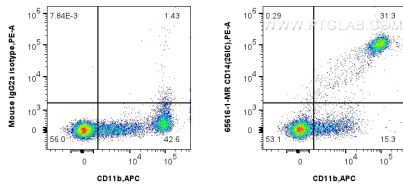
T: 4006900926

E: Proteintech-CN@ptglab.com

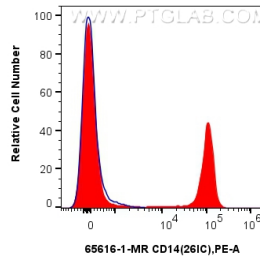
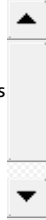
W: ptgcn.com

This product is exclusively available under Proteintech Group brand and is not available to purchase from any other manufacturer.

Selected Validation Data



1x10⁶ human PBMCs were surface stained with 0.25 ug Anti-Human CD14 (261C) Mouse IgG2a Recombinant Antibody (65616-1-MR, Clone: 261C) or Mouse IgG2a Isotype Control, and PE-conjugated Goat Anti-Mouse IgG. Cells were then stained with APC Anti-Human CD11b (ICRF44) (APC-65116, Clone: ICRF44). Cells were incubated with FC Receptor Block prior to fixing and staining. Cells were not fixed. This data was developed using the same antibody clone with 65616-1-PBS in a



1x10⁶ human PBMCs were surface stained with 0.25 ug Anti-Human CD14 (261C) Mouse IgG2a Recombinant Antibody (65616-1-MR, Clone:261C) (red) or Mouse IgG2a Isotype Control (blue), and PE-conjugated Goat Anti-Mouse IgG. Cells were incubated with FC Receptor Block prior to fixing and staining. Cells were not fixed. This data was developed using the same antibody clone with 65616-1-PBS in a different storage buffer formulation.