

For Research Use Only

Anti-Human CD85j / LILRB1 (GHI/75) Mouse IgG2a Recombinant Antibody

Catalog Number: 65623-1-MR



Basic Information

Catalog Number:

65623-1-MR

Size:

100ug, 1 mg/ml

Source:

Mouse

Isotype:

IgG2a

GenBank Accession Number:

BC015731

GeneID (NCBI):

10859

Full Name:

leukocyte immunoglobulin-like
receptor, subfamily B (with TM and
ITIM domains), member 1

Calculated MW:

71 kDa

Purification Method:

Protein A purification

CloneNo.:

GHI/75

Applications

Tested Applications:

FC

Species Specificity:

human

Background Information

LILRB1, also named as CD85j or ILT2, includes four C2 Ig domains binding HLA class I molecules in the extracellular region and a cytoplasmic domain containing four immunoreceptor tyrosine-based inhibition motifs (ITIM). LILRB1 is a surface glycoprotein detected on the surface of B cells, monocytes, dendritic cells, T cells and NK cells.

Storage

Storage:

Store at 2-8°C. Stable for one year after shipment.

Storage Buffer:

PBS with 0.09% sodium azide.

For technical support and original validation data for this product please contact:

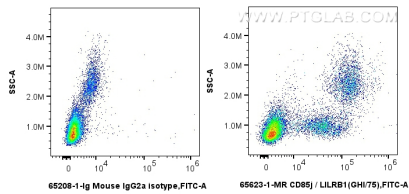
T: 4006900926

E: Proteintech-CN@ptglab.com

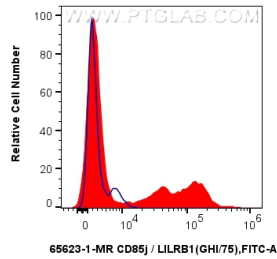
W: ptgcn.com

This product is exclusively available under Proteintech Group brand and is not available to purchase from any other manufacturer.

Selected Validation Data



1x10⁶ human PBMCs were surface stained with 0.25 ug Anti-Human CD85j / LILRB1 (GHI/75) Mouse IgG2a Recombinant Antibody (65623-1-MR, Clone: GHI/75) or Mouse IgG2a Isotype Control (C1.18.4) (65208-1-Ig, Clone: C1.18.4) and CoraLite®488-Conjugated AffiniPure Donkey Anti-Mouse IgG(H+L). Cells were incubated with FC Receptor Block prior to staining. Cells were not fixed.



1x10⁶ human PBMCs were surface stained with 0.25 ug Anti-Human CD85j / LILRB1 (GHI/75) Mouse IgG2a Recombinant Antibody (65623-1-MR, Clone: GHI/75) (red) or Mouse IgG2a Isotype Control (C1.18.4) (65208-1-Ig, Clone: C1.18.4) (blue) and CoraLite®488-Conjugated AffiniPure Donkey Anti-Mouse IgG(H+L). Cells were incubated with FC Receptor Block prior to staining. Cells were not fixed.