

For Research Use Only

# Anti-Human CD85j / LILRB1 (GHI/75) Mouse IgG2a Recombinant Antibody, PBS Only

Catalog Number: 65623-1-PBS



## Basic Information

Catalog Number:

65623-1-PBS

Size:

1mg, 2mg/ml

Source:

Mouse

Isotype:

IgG2a

GenBank Accession Number:

BC015731

GeneID (NCBI):

10859

Full Name:

leukocyte immunoglobulin-like  
receptor, subfamily B (with TM and  
ITIM domains), member 1

Calculated MW:

71 kDa

Purification Method:

Protein A purification

CloneNo.:

GHI/75

## Applications

Tested Applications:

FC

Species Specificity:

human

## Background Information

LILRB1, also named as CD85j or ILT2, includes four C2 Ig domains binding HLA class I molecules in the extracellular region and a cytoplasmic domain containing four immunoreceptor tyrosine-based inhibition motifs (ITIM). LILRB1 is a surface glycoprotein detected on the surface of B cells, monocytes, dendritic cells, T cells and NK cells.

## Storage

Storage:

Store at -80°C.

**The product is shipped with ice packs. Upon receipt, store it immediately at -80°C**

Storage Buffer:

PBS Only

For technical support and original validation data for this product please contact:

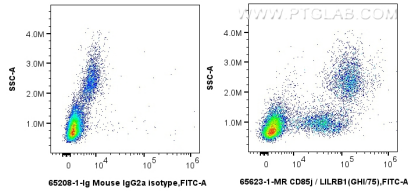
T: 4006900926

E: [Proteintech-CN@ptglab.com](mailto:Proteintech-CN@ptglab.com)

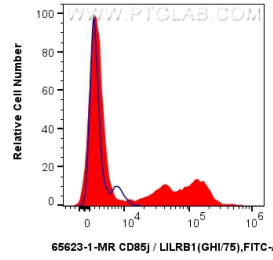
W: [ptgcn.com](http://ptgcn.com)

**This product is exclusively available under Proteintech Group brand and is not available to purchase from any other manufacturer.**

## Selected Validation Data



1x10<sup>6</sup> human PBMCs were surface stained with 0.25 ug Anti-Human CD85j / LILRB1 (GHI/75) Mouse IgG2a Recombinant Antibody (65623-1-MR, Clone: GHI/75) or Mouse IgG2a Isotype Control (C1.18.4) (65208-1-Ig, Clone: C1.18.4) and CoraLite®488-Conjugated AffiniPure Donkey Anti-Mouse IgG(H+L). Cells were incubated with FC Receptor Block prior to staining. Cells were not fixed. This data was developed using the same antibody clone with 65623-1-PBS in a different storage buffer



1x10<sup>6</sup> human PBMCs were surface stained with 0.25 ug Anti-Human CD85j / LILRB1 (GHI/75) Mouse IgG2a Recombinant Antibody (65623-1-MR, Clone: GHI/75) (red) or Mouse IgG2a Isotype Control (C1.18.4) (65208-1-Ig, Clone: C1.18.4) (blue) and CoraLite®488-Conjugated AffiniPure Donkey Anti-Mouse IgG(H+L). Cells were incubated with FC Receptor Block prior to staining. Cells were not fixed. This data was developed using the same antibody clone with 65623-1-PBS in a