

For Research Use Only

IVD Monoclonal antibody

Catalog Number: 66032-1-Ig 1 Publications



Basic Information

Catalog Number: 66032-1-Ig	GenBank Accession Number: BC017202	Purification Method: Protein A purification
Size: 1700 µg/ml	GeneID (NCBI): 3712	CloneNo.: 2D12A5
Source: Mouse	UNIPROT ID: P26440	Recommended Dilutions: WB 1:1000-1:6000 IHC 1:500-1:2000 IF-P 1:50-1:500 IF/ICC 1:10-1:100
Isotype: IgG2a	Full Name: isovaleryl Coenzyme A dehydrogenase	
Immunogen Catalog Number: AG18042	Calculated MW: 46 kDa	
	Observed MW: 41-46 kDa	

Applications

Tested Applications: WB, IHC, IF/ICC, IF-P, ELISA	Positive Controls: WB : HEK-293 cells, human liver tissue, MCF-7 cells, Jurkat cells, LO2 cells IHC : human liver cancer tissue, human liver tissue IF-P : human liver cancer tissue, IF/ICC : MCF-7 cells,
Cited Applications: WB	
Species Specificity: human	
Cited Species: rat	
Note-IHC: suggested antigen retrieval with TE buffer pH 9.0; (*) Alternatively, antigen retrieval may be performed with citrate buffer pH 6.0	

Background Information

IVD(Isovaleryl CoA dehydrogenase, mitochondrial) is a member of the acylCoA dehydrogenase family and is involved in the catabolism of leucine. In size, IVD precursor and mature proteins produced by class I mutants are indistinguishable from their normal counterparts. Class II, III, and IV mutants make IVD precursor proteins 42 kD in size rather than the normal 45 kD(PMID:2063866). It has 2 isoforms produced by alternative splicing.

Notable Publications

Author	Pubmed ID	Journal	Application
Hui Liu	26168851	Arch Toxicol	WB

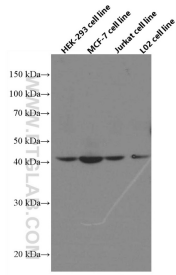
Storage

Storage:
Store at -20°C. Stable for one year after shipment.
Storage Buffer:
PBS with 0.02% sodium azide and 50% glycerol pH 7.3.
Aliquoting is unnecessary for -20°C storage

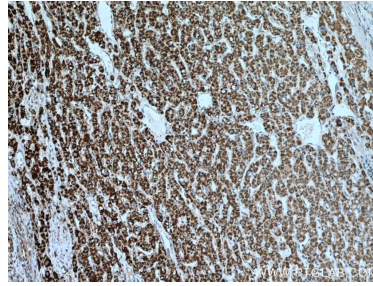
For technical support and original validation data for this product please contact:
T: 4006900926 E: Proteintech-CN@ptglab.com W: ptgcn.com

This product is exclusively available under Proteintech Group brand and is not available to purchase from any other manufacturer.

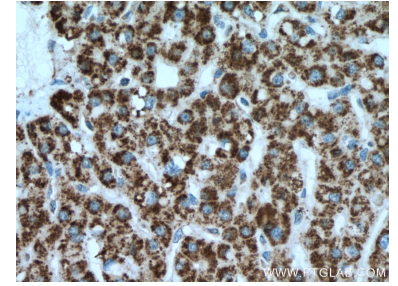
Selected Validation Data



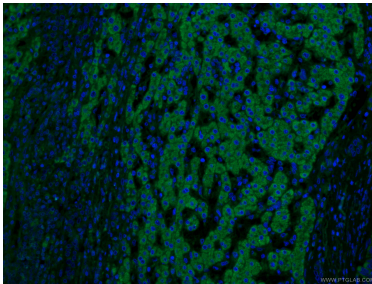
Various lysates were subjected to SDS PAGE followed by western blot with 66032-1-Ig (IVD antibody) at dilution of 1:3000 incubated at room temperature for 1.5 hours.



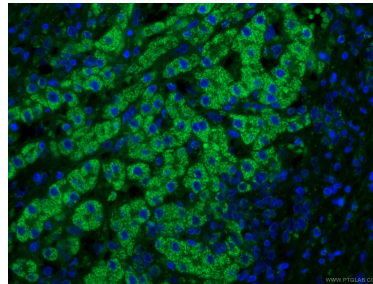
Immunohistochemical analysis of paraffin-embedded human liver cancer tissue slide using 66032-1-Ig (IVD antibody) at dilution of 1:1000 (under 10x lens). Heat mediated antigen retrieval with Tris-EDTA buffer (pH 9.0).



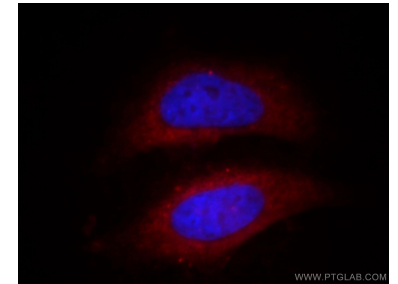
Immunohistochemical analysis of paraffin-embedded human liver cancer tissue slide using 66032-1-Ig (IVD antibody) at dilution of 1:1000 (under 40x lens). Heat mediated antigen retrieval with Tris-EDTA buffer (pH 9.0).



Immunofluorescent analysis of (4% PFA) fixed human liver cancer tissue using 66032-1-Ig (IVD antibody) at dilution of 1:100 and CoraLite488-Conjugated AffiniPure Goat Anti-Mouse IgG(H+L).



Immunofluorescent analysis of (4% PFA) fixed human liver cancer tissue using 66032-1-Ig (IVD antibody) at dilution of 1:100 and CoraLite488-Conjugated AffiniPure Goat Anti-Mouse IgG(H+L).



Immunofluorescent analysis of MCF-7 cells, using IVD antibody 66032-1-Ig at 1:25 dilution and Rhodamine-labeled goat anti-mouse IgG (red). Blue pseudocolor = DAPI (fluorescent DNA dye).