

For Research Use Only

CUL4A Monoclonal antibody, PBS Only



Catalog Number: 66038-1-PBS

Featured Product

Basic Information

Catalog Number:

66038-1-PBS

Size:

1 mg/ml

Source:

Mouse

Isotype:

IgG1

Immunogen Catalog Number:

AG18089

GenBank Accession Number:

BC008308

GeneID (NCBI):

8451

UNIPROT ID:

Q13619

Full Name:

cullin 4A

Calculated MW:

77 kDa

Observed MW:

77 kDa, 88 kDa

Purification Method:

Protein A purification

CloneNo.:

1A7F12

Applications

Tested Applications:

WB, IP, Indirect ELISA, IHC, IF

Species Specificity:

human, monkey, mouse, rat, pig

Background Information

Cullin proteins assemble a large number of RING E3 ubiquitin ligases, participating in the proteolysis through the ubiquitin-proteasome pathway. Two cullin 4 (CUL4) proteins, CUL4A (87 kDa) and CUL4B (104 kDa), have been identified. The two CUL4 sequences are 83% identical. They target certain proteins for degradation by binding protein DDB1 to form a CUL4-DDB1 ubiquitin ligase complex with DDB. They form two individual E3 ligases, DDB1-CUL4A/DDB2 and DDB1-CUL4B/DDB2 in this process. CUL4A appeared in both the nucleus and the cytosol, suggesting a more complex mechanism for entering the nucleus. CUL4B is localized in the nucleus and facilitates the transfer of DDB1 into the nucleus independently of DDB2.

Storage

Storage:

Store at -80°C.

The product is shipped with ice packs. Upon receipt, store it immediately at -80°C

Storage Buffer:

PBS Only

For technical support and original validation data for this product please contact:

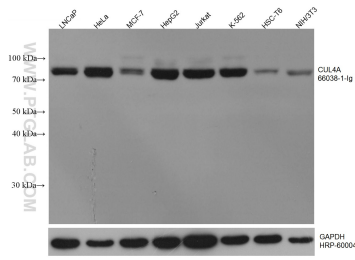
T: 4006900926

E: Proteintech-CN@ptglab.com

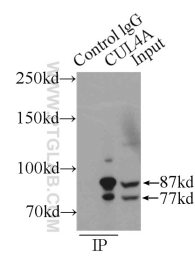
W: ptgcn.com

This product is exclusively available under Proteintech Group brand and is not available to purchase from any other manufacturer.

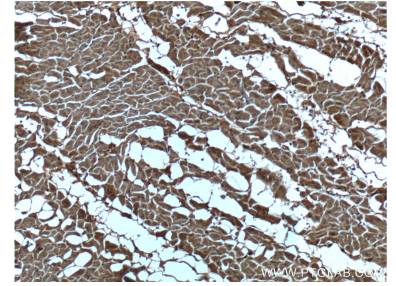
Selected Validation Data



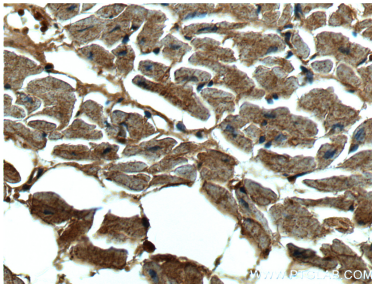
Various lysates were subjected to SDS PAGE followed by western blot with 66038-1-Ig (CUL4A antibody) at dilution of 1:10000 incubated at room temperature for 1.5 hours. The membrane was stripped and reblotted with HRP-conjugated GAPDH Monoclonal antibody (HRP-60004) as loading control. This data was developed using the same antibody clone with 66038-1-PBS in a different storage buffer formulation.



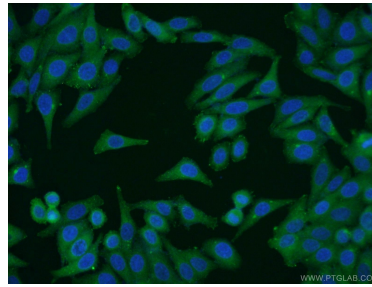
IP result of anti-CUL4A (IP:66038-1-Ig, 4ug; Detection:66038-1-Ig 1:500) with MCF-7 cells lysate 2800ug. This data was developed using the same antibody clone with 66038-1-PBS in a different storage buffer formulation.



Immunohistochemical analysis of paraffin-embedded human heart tissue slide using 66038-1-Ig (CUL4A Antibody) at dilution of 1:200 (under 10x lens). This data was developed using the same antibody clone with 66038-1-PBS in a different storage buffer formulation.



Immunohistochemical analysis of paraffin-embedded human heart tissue slide using 66038-1-Ig (CUL4A Antibody) at dilution of 1:200 (under 40x lens). This data was developed using the same antibody clone with 66038-1-PBS in a different storage buffer formulation.



Immunofluorescent analysis of HepG2 cells using 66038-1-Ig (CUL4A antibody) at dilution of 1:50 and Alexa Fluor 488-conjugated AffiniPure Goat Anti-Mouse IgG (H+L). This data was developed using the same antibody clone with 66038-1-PBS in a different storage buffer formulation.