

For Research Use Only

CPT1A Monoclonal antibody

Catalog Number:66039-3-Ig



Basic Information

Catalog Number:

66039-3-Ig

Size:

1000 μ g/ml

Source:

Mouse

Isotype:

IgG1

Immunogen Catalog Number:

AG7745

GenBank Accession Number:

BC000185

GeneID (NCBI):

1374

UNIPROT ID:

P50416

Full Name:

carnitine palmitoyltransferase 1A
(liver)

Calculated MW:

88 kDa

Observed MW:

86 kDa

Purification Method:

Protein G purification

CloneNo.:

5D2B8

Recommended Dilutions:

WB 1:5000-1:50000

Applications

Tested Applications:

Species Specificity:

human

Positive Controls:

WB : TT cells, HeLa cells, LNCaP cells, PANC-1 cells,
HaCaT cells

Background Information

CPT1A, also named as CPT1, CPT1-L and L-CPTI, belongs to the carnitine/choline acetyltransferase family. Carnitine palmitoyltransferase (CPT) deficiencies are common disorders of mitochondrial fatty acid oxidation. The CPT system is made up of two separate proteins located in the outer (CPT1) and inner (CPT2) mitochondrial membranes. CPT1A is an active forms of related liver-type carnitine palmitoyltransferase I. (PMID: 11001805). CPT1A deficiency presents as recurrent attacks of fasting hypoketotic hypoglycemia. (PMID: 15363638). This antibody can bind the close sequences genes.

Storage

Storage:

Store at -20°C. Stable for one year after shipment.

Storage Buffer:

PBS with 0.02% sodium azide and 50% glycerol pH 7.3.

Aliquoting is unnecessary for -20°C storage

For technical support and original validation data for this product please contact:

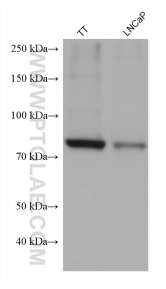
T: 4006900926

E: Proteintech-CN@ptglab.com

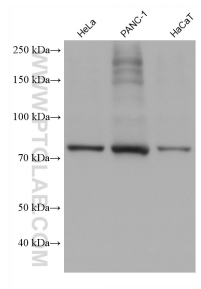
W: ptgcn.com

This product is exclusively available under Proteintech Group brand and is not available to purchase from any other manufacturer.

Selected Validation Data



Various lysates were subjected to SDS PAGE followed by western blot with 66039-3-Ig (CPT1A antibody) at dilution of 1:10000 incubated at room temperature for 1.5 hours.



Various lysates were subjected to SDS PAGE followed by western blot with 66039-3-Ig (CPT1A antibody) at dilution of 1:10000 incubated at room temperature for 1.5 hours.