

For Research Use Only

# RPS3 Monoclonal antibody, PBS Only



Catalog Number: 66046-1-PBS

Featured Product

## Basic Information

Catalog Number:

66046-1-PBS

Size:

1 mg/ml

Source:

Mouse

Isotype:

IgG2a

Immunogen Catalog Number:

AG7515

GenBank Accession Number:

BC003137

GeneID (NCBI):

6188

UNIPROT ID:

P23396

Full Name:

ribosomal protein S3

Calculated MW:

27 kDa

Observed MW:

33 kDa

Purification Method:

Protein A purification

CloneNo.:

2G7H4

## Applications

Tested Applications:

WB, IP, Indirect ELISA, IHC, IF

Species Specificity:

human, mouse, rat

## Background Information

40S ribosomal protein S3 (RPS3), also named as SW-cl.26, is a 243 amino acid protein, which contains one KH type-2 domain and belongs to the ribosomal protein S3P family. RPS3 localizes in the cytoplasm. RPS3 is identified in a IGF2BP1-dependent mRNP granule complex, which contains untranslated mRNAs. RPS3 plays a role in repairing various DNA damage acting as a repair UV endonuclease. Nuclear accumulation of RPS3 results in an increase in DNA repair activity to some extent, thereby sustaining neuronal survival. The calculated molecular weight of RPS3 is 26 kDa, but the modified RPS3 is about 33 kDa.

## Storage

Storage:

Store at -80°C.

The product is shipped with ice packs. Upon receipt, store it immediately at -80°C

Storage Buffer:

PBS Only

For technical support and original validation data for this product please contact:

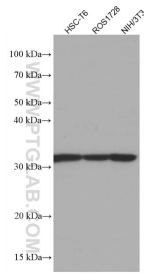
T: 4006900926

E: [Proteintech-CN@ptglab.com](mailto:Proteintech-CN@ptglab.com)

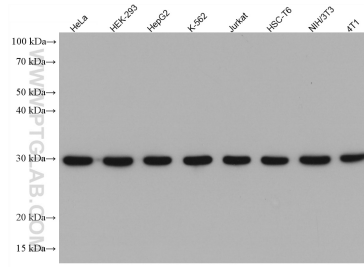
W: [ptgcn.com](http://ptgcn.com)

This product is exclusively available under Proteintech Group brand and is not available to purchase from any other manufacturer.

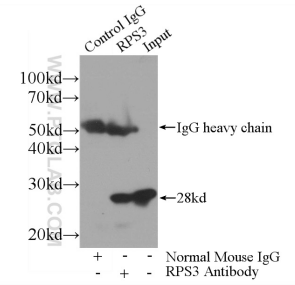
## Selected Validation Data



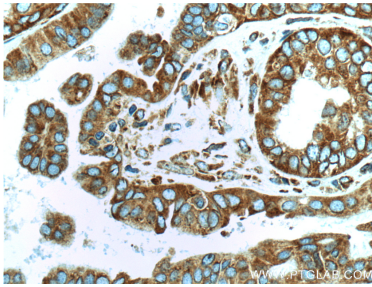
Various lysates were subjected to SDS PAGE followed by western blot with 66046-1-Ig (RPS3 antibody) at dilution of 1:50000 incubated at room temperature for 1.5 hours. This data was developed using the same antibody clone with 66046-1-PBS in a different storage buffer formulation.



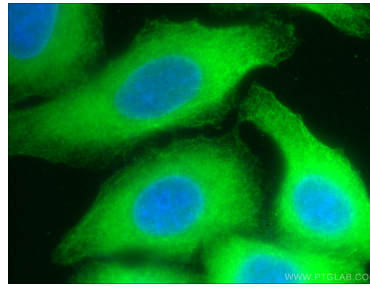
Various lysates were subjected to SDS PAGE followed by western blot with 66046-1-Ig (RPS3 antibody) at dilution of 1:100000 incubated at room temperature for 1.5 hours. This data was developed using the same antibody clone with 66046-1-PBS in a different storage buffer formulation.



IP result of anti-RPS3 (IP:66046-1-Ig, 3ug; Detection:66046-1-Ig 1:2000) with HEK-293 cells lysate 1800ug. This data was developed using the same antibody clone with 66046-1-PBS in a different storage buffer formulation.



Immunohistochemical analysis of paraffin-embedded human ovary tumor tissue slide using 66046-1-Ig (RPS3 Antibody) at dilution of 1:1000 (under 40x lens). Heat mediated antigen retrieval with Tris-EDTA buffer (pH 9.0). This data was developed using the same antibody clone with 66046-1-PBS in a different storage buffer formulation.



Immunofluorescent analysis of (-20°C Ethanol ) fixed HepG2 cells using 66046-1-Ig(RPS3 antibody) at dilution of 1:100 and Alexa Fluor 488-conjugated AffiniPure Goat Anti-Mouse IgG(H+L). This data was developed using the same antibody clone with 66046-1-PBS in a different storage buffer formulation.