

For Research Use Only

NDUFA4L2 Monoclonal antibody

Catalog Number: 66050-1-Ig **2 Publications**



Basic Information

Catalog Number: 66050-1-Ig	GenBank Accession Number: BC011910	Purification Method: Protein A purification
Size: 1200 µg/ml	GeneID (NCBI): 56901	CloneNo.: 1G1H10
Source: Mouse	UNIPROT ID: Q9NRX3	Recommended Dilutions: WB 1:500-1:2000 IHC 1:200-1:1000 IF 1:200-1:800
Isotype: IgG2a	Full Name: NADH dehydrogenase (ubiquinone) 1 alpha subcomplex, 4-like 2	
Immunogen Catalog Number: AG9233	Calculated MW: 87 aa, 10 kDa	
	Observed MW: 10 kDa	

Applications

Tested Applications: IF/ICC, IHC, WB, ELISA	Positive Controls: WB : HeLa cells, IHC : human breast cancer tissue, human renal cell carcinoma tissue IF : HUVEC cells, HeLa cells, MCF-7 cells
Cited Applications: WB, IHC	
Species Specificity: human	
Cited Species: human	

Note-IHC: suggested antigen retrieval with TE buffer pH 9.0; (*) Alternatively, antigen retrieval may be performed with citrate buffer pH 6.0

Background Information

NDUFA4L2, also named as NUOMS, is a HIF-1 α target gene that localizes to the mitochondria. It downregulates oxygen consumption and Complex I activity in hypoxia. NDUFA4L2 is involved in hypoxic adaptation by decreasing mitochondrial ROS production.

Notable Publications

Author	Pubmed ID	Journal	Application
Sen Qin	38407266	Elife	IHC
Jaclyn M Kubala	36722045	Cancer Biol Ther	WB

Storage

Storage:
Store at -20°C. Stable for one year after shipment.
Storage Buffer:
PBS with 0.02% sodium azide and 50% glycerol pH 7.3.
Aliquoting is unnecessary for -20°C storage

For technical support and original validation data for this product please contact:

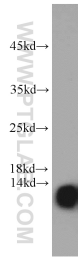
T: 4006900926

E: Proteintech-CN@ptglab.com

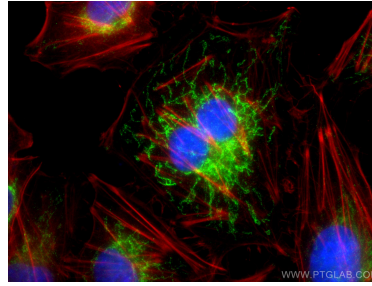
W: ptgcn.com

This product is exclusively available under Proteintech Group brand and is not available to purchase from any other manufacturer.

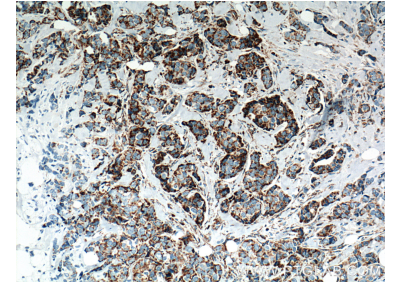
Selected Validation Data



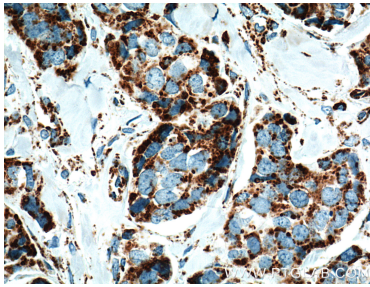
HeLa cells were subjected to SDS PAGE followed by western blot with 66050-1-Ig (NDUFA4L2 antibody) at dilution of 1:1000 incubated at room temperature for 1.5 hours.



Immunofluorescent analysis of (4% PFA) fixed HUVEC cells using NDUFA4L2 antibody (66050-1-Ig, Clone: 1G1H10) at dilution of 1:400 and CoraLite®488-Conjugated AffiniPure Goat Anti-Mouse IgG(H+L).



Immunohistochemical analysis of paraffin-embedded human breast cancer tissue slide using 66050-1-Ig (NDUFA4L2 Antibody) at dilution of 1:500 (under 10x lens). Heat mediated antigen retrieval with Tris-EDTA buffer (pH 9.0).



Immunohistochemical analysis of paraffin-embedded human breast cancer tissue slide using 66050-1-Ig (NDUFA4L2 Antibody) at dilution of 1:500 (under 40x lens). Heat mediated antigen retrieval with Tris-EDTA buffer (pH 9.0).