

For Research Use Only

NDUFS5 Monoclonal antibody, PBS Only (Detector)

Catalog Number: 66053-1-PBS



Basic Information

Catalog Number: 66053-1-PBS	GenBank Accession Number: BC001884	Purification Method: Protein A purification
Size: 1mg/ml	GeneID (NCBI): 4725	CloneNo.: 2C2A5
Source: Mouse	UNIPROT ID: O43920	
Isotype: IgG2b	Full Name: NADH dehydrogenase (ubiquinone) Fe-S protein 5, 15kDa (NADH- coenzyme Q reductase)	
Immunogen Catalog Number: AG7663	Calculated MW: 13 kDa	
	Observed MW: 15 kDa	

Applications

Tested Applications:
WB, IHC, Cytometric bead array, Indirect ELISA

Species Specificity:
human

Background Information

NDUFS5 gene is a member of the NADH dehydrogenase (ubiquinone) iron-sulfur protein family. The encoded protein is a subunit of the NADH:ubiquinone oxidoreductase (complex I), the first enzyme complex in the electron transport chain located in the inner mitochondrial membrane. The NDUFS5 mRNA is expressed ubiquitously in human tissues, with a relative higher expression in human heart, skeletal muscle, liver, kidney and fetal heart (PMID: 10070614). The NDUFS5 (15 kDa) subunit located at mitochondrion and contains two C-X9-C motifs that are predicted to form a helix-coil-helix structure, permitting the formation of intramolecular disulfide bonds (PMID: 21310150). Proteintech's NDUFS5 antibody 66053-1-Ig is capable of detecting the 15 kDa protein in Western blotting.

Storage

Storage:
Store at -80°C.
The product is shipped with ice packs. Upon receipt, store it immediately at -80°C

Storage Buffer:
PBS Only

For technical support and original validation data for this product please contact:

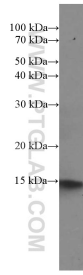
T: 4006900926

E: Proteintech-CN@ptglab.com

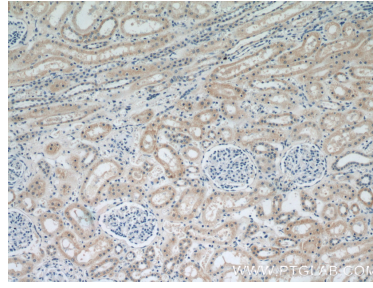
W: ptgcn.com

This product is exclusively available under Proteintech Group brand and is not available to purchase from any other manufacturer.

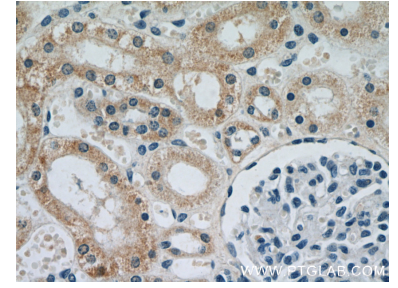
Selected Validation Data



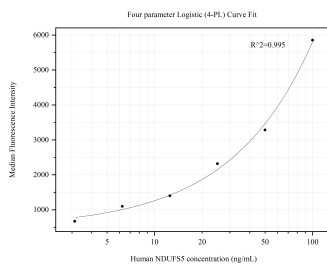
HepG2 cells were subjected to SDS PAGE followed by western blot with 66053-1-Ig (NDUFS5 antibody) at dilution of 1:2000 incubated at room temperature for 1.5 hours. This data was developed using the same antibody clone with 66053-1-PBS in a different storage buffer formulation.



Immunohistochemical analysis of paraffin-embedded human kidney using 66053-1-Ig(NDUFS5 antibody) at dilution of 1:50 (under 10x lens). This data was developed using the same antibody clone with 66053-1-PBS in a different storage buffer formulation.



Immunohistochemical analysis of paraffin-embedded human kidney using 66053-1-Ig(NDUFS5 antibody) at dilution of 1:50 (under 40x lens). This data was developed using the same antibody clone with 66053-1-PBS in a different storage buffer formulation.



Cytometric bead array standard curve of MP50607-1, NDUFS5 Monoclonal Matched Antibody Pair, PBS Only. Capture antibody: 66053-2-PBS. Detection antibody: 66053-1-PBS. Standard:Ag7663. Range: 3.125-100 ng/mL.