

For Research Use Only

NTF2 Monoclonal antibody, PBS Only



Catalog Number: 66063-1-PBS

Featured Product

Basic Information

Catalog Number: 66063-1-PBS	GenBank Accession Number: BC002348	Purification Method: Protein G purification
Size: 1 mg/ml	GeneID (NCBI): 10204	CloneNo.: 4H7F9
Source: Mouse	UNIPROT ID: P61970	
Isotype: IgG1	Full Name: nuclear transport factor 2	
Immunogen Catalog Number: AG7879	Calculated MW: 14 kDa	
	Observed MW: 13 kDa	

Applications

Tested Applications:
WB, Indirect ELISA, IHC

Species Specificity:
human

Background Information

NUTF2 (nuclear transport factor 2), also named as NTF2, is a cytosolic protein responsible for nuclear import of Ran, a small Ras-like GTPase involved in a number of critical cellular processes, including cell cycle regulation, chromatin organization during mitosis, reformation of the nuclear envelope following mitosis, and controlling the directionality of nucleocytoplasmic transport. Nucleocytoplasmic translocation of NTF2 is regulated in mammalian cells, and may involve a tyrosine and/or threonine kinase-dependent signal transduction mechanism(s) (PMID: 22880006). The MW of this protein is 14 kDa, and this antibody specially recognises the 14 kDa protein.

Storage

Storage:
Store at -80°C.
The product is shipped with ice packs. Upon receipt, store it immediately at -80°C

Storage Buffer:
PBS Only

For technical support and original validation data for this product please contact:

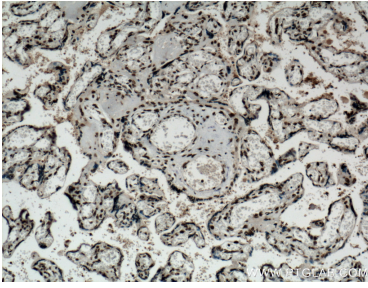
T: 4006900926

E: Proteintech-CN@ptglab.com

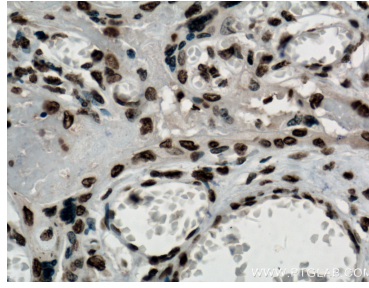
W: ptgcn.com

This product is exclusively available under Proteintech Group brand and is not available to purchase from any other manufacturer.

Selected Validation Data



Immunohistochemical analysis of paraffin-embedded human placenta tissue slide using 66063-1-Ig (NTF2 antibody) at dilution of 1:500 (under 10x lens. Heat mediated antigen retrieval with Tris-EDTA buffer (pH 9.0). This data was developed using the same antibody clone with 66063-1-PBS in a different storage buffer formulation.



Immunohistochemical analysis of paraffin-embedded human placenta tissue slide using 66063-1-Ig (NTF2 antibody) at dilution of 1:500 (under 40x lens. Heat mediated antigen retrieval with Tris-EDTA buffer (pH 9.0). This data was developed using the same antibody clone with 66063-1-PBS in a different storage buffer formulation.



HeLa cells were subjected to SDS PAGE followed by western blot with 66063-1-Ig (NTF2 antibody) at dilution of 1:1000 incubated at room temperature for 1.5 hours. This data was developed using the same antibody clone with 66063-1-PBS in a different storage buffer formulation.