

For Research Use Only

CD31 Monoclonal antibody, PBS Only (Capture)



Catalog Number: 66065-3-PBS

Basic Information

Catalog Number:

66065-3-PBS

Size:

1 mg/ml

Source:

Mouse

Isotype:

IgG1

Immunogen Catalog Number:

AG19730

GenBank Accession Number:

BC022512

GeneID (NCBI):

5175

ENSEMBL Gene ID:

ENSG00000261371

UNIPROT ID:

P16284

Full Name:

platelet/endothelial cell adhesion molecule

Calculated MW:

83 kDa

Purification Method:

Protein G Magarose purification

CloneNo.:

4B9C12

Applications

Tested Applications:

Cytometric bead array, Indirect ELISA

Species Specificity:

human

Background Information

Storage

Storage:

Store at -80°C.

The product is shipped with ice packs. Upon receipt, store it immediately at -80°C

Storage Buffer:

PBS Only

For technical support and original validation data for this product please contact:

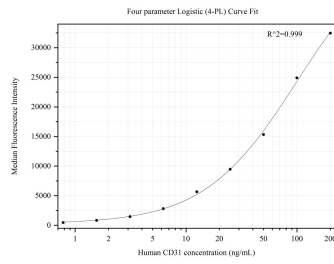
T: 4006900926

E: Proteintech-CN@ptglab.com

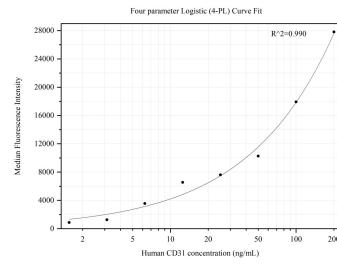
W: ptgcn.com

This product is exclusively available under Proteintech Group brand and is not available to purchase from any other manufacturer.

Selected Validation Data



Cytometric bead array standard curve of MP50319-1, CD31 Monoclonal Matched Antibody Pair, PBS Only. Capture antibody: 66065-3-PBS. Detection antibody: 66065-4-PBS. Standard:Ag1787. Range: 0.781-200 ng/mL



Cytometric bead array standard curve of MP50319-3, CD31 Monoclonal Matched Antibody Pair, PBS Only. Capture antibody: 66065-3-PBS. Detection antibody: 66065-6-PBS. Standard:Ag1787. Range: 1.563-200 ng/mL