

For Research Use Only

SRP9 Monoclonal antibody

Catalog Number: 66068-1-Ig

Featured Product

2 Publications



Basic Information

Catalog Number:

66068-1-Ig

Size:

1600 µg/ml

Source:

Mouse

Isotype:

IgG2a

Immunogen Catalog Number:

AG17153

GenBank Accession Number:

BC015094

GeneID (NCBI):

6726

UNIPROT ID:

P49458

Full Name:

signal recognition particle 9kDa

Calculated MW:

10 kDa

Observed MW:

10 kDa

Purification Method:

Protein A purification

CloneNo.:

1H7G10

Recommended Dilutions:

WB 1:1000-1:4000

Applications

Tested Applications:

WB, ELISA

Cited Applications:

WB

Species Specificity:

human, rat, mouse

Cited Species:

human

Positive Controls:

WB : HSC-T6 cells, HeLa cells, HEK-293 cells, ROS1728 cells, NIH/3T3 cells, 4T1 cells

Background Information

Signal recognition particle 9(SRP9) is component of the signal recognition particle (SRP), which is a ribonucleoprotein complex that mediates the targeting of proteins to the rough endoplasmic reticulum (ER). SRP9 form a heterodimer with SRP14, which involves in arrest of the elongation of the nascent chains during targeting to ensure efficient translocation of the preprotein.

Notable Publications

| Author | Pubmed ID | Journal | Application |
|-----------------|-----------|-------------------|-------------|
| John B Moldovan | 38850156 | Nucleic Acids Res | WB |
| John B Moldovan | 38746229 | bioRxiv | WB |

Storage

Storage:

Store at -20°C. Stable for one year after shipment.

Storage Buffer:

PBS with 0.02% sodium azide and 50% glycerol pH 7.3.

Aliquoting is unnecessary for -20°C storage

For technical support and original validation data for this product please contact:

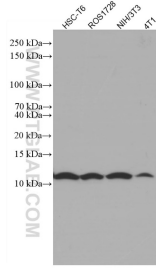
T: 4006900926

E: Proteintech-CN@ptglab.com

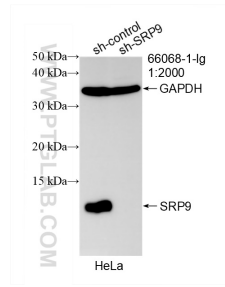
W: ptgcn.com

This product is exclusively available under Proteintech Group brand and is not available to purchase from any other manufacturer.

Selected Validation Data



Various lysates were subjected to SDS PAGE followed by western blot with 66068-1-Ig (SRP9 antibody) at dilution of 1:2000 incubated at room temperature for 1.5 hours.



WB result of SRP9 antibody (66068-1-Ig; 1:2000; incubated at room temperature for 1.5 hours) with sh-Control and sh-SRP9 transfected HeLa cells.