

For Research Use Only

EPLIN Monoclonal antibody, PBS Only



Catalog Number: 66071-1-PBS

Featured Product

Basic Information

Catalog Number: 66071-1-PBS	GenBank Accession Number: BC001247	Purification Method: Protein A purification
Size: 1mg/ml	GeneID (NCBI): 51474	CloneNo.: 6E6E6
Source: Mouse	UNIPROT ID: Q9UHB6	
Isotype: IgG1	Full Name: LIM domain and actin binding 1	
Immunogen Catalog Number: AG13288	Calculated MW: 85 kDa	
	Observed MW: 90 kDa, 110 kDa	

Applications

Tested Applications:
WB, IHC, IF/ICC, Indirect ELISA

Species Specificity:
human, rat

Background Information

EPLIN is a cytoskeletal protein that is preferentially expressed in epithelial cells and is implicated in regulation of cytoskeletal dynamics and cytokinesis. In human, there are two known isoforms, EPLIN-a and -b, generated by alternative promoter usage from a single gene. EPLIN-a expression is often down-regulated in cancerous cells and tissues. This antibody recognizes both of isoforms of EPLIN.

Storage

Storage:
Store at -80°C.
The product is shipped with ice packs. Upon receipt, store it immediately at -80°C

Storage Buffer:
PBS Only

For technical support and original validation data for this product please contact:

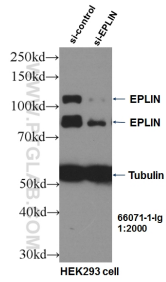
T: 4006900926

E: Proteintech-CN@ptglab.com

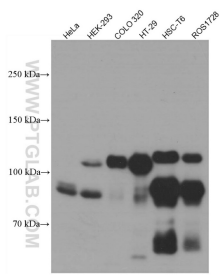
W: ptgcn.com

This product is exclusively available under Proteintech Group brand and is not available to purchase from any other manufacturer.

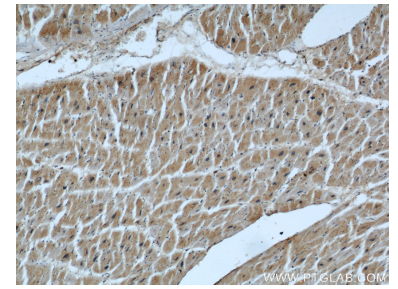
Selected Validation Data



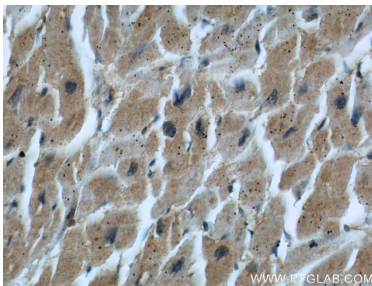
WB result of EPLIN antibody (66071-1-Ig, 1:2000) with si-Control and si-EPLIN transfected HEK293 cells. This data was developed using the same antibody clone with 66071-1-PBS in a different storage buffer formulation.



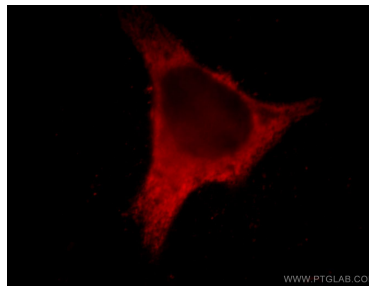
Various lysates were subjected to SDS PAGE followed by western blot with 66071-1-Ig (EPLIN antibody) at dilution of 1:5000 incubated at room temperature for 1.5 hours. This data was developed using the same antibody clone with 66071-1-PBS in a different storage buffer formulation.



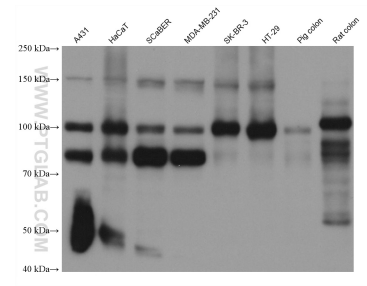
Immunohistochemical analysis of paraffin-embedded human heart using 66071-1-Ig (EPLIN antibody) at dilution of 1:50 (under 10x lens). This data was developed using the same antibody clone with 66071-1-PBS in a different storage buffer formulation.



Immunohistochemical analysis of paraffin-embedded human heart using 66071-1-Ig (EPLIN antibody) at dilution of 1:50 (under 40x lens). This data was developed using the same antibody clone with 66071-1-PBS in a different storage buffer formulation.



Immunofluorescent analysis of HeLa cells using 66071-1-Ig (EPLIN antibody) at dilution of 1:50 and Rhodamine-Goat anti-Mouse IgG. This data was developed using the same antibody clone with 66071-1-PBS in a different storage buffer formulation.



Various lysates were subjected to SDS PAGE followed by western blot with 66071-1-Ig (EPLIN antibody) at dilution of 1:20000 incubated at room temperature for 1.5 hours. This data was developed using the same antibody clone with 66071-1-PBS in a different storage buffer formulation.