

For Research Use Only

Apolipoprotein H Monoclonal antibody, PBS Only



Catalog Number: 66074-1-PBS

Basic Information

Catalog Number: 66074-1-PBS	GenBank Accession Number: BC026283	Purification Method: Protein A purification
Size: 1 mg/ml	GeneID (NCBI): 350	CloneNo.: 4D9A4
Source: Mouse	UNIPROT ID: P02749	
Isotype: IgG1	Full Name: apolipoprotein H (beta-2-glycoprotein I)	
Immunogen Catalog Number: AG17915	Calculated MW: 345 aa, 38 kDa	
	Observed MW: 50-53 kDa	

Applications

Tested Applications:
WB,IHC,IF,ELISA

Species Specificity:
human, mouse, rat, pig

Background Information

Apolipoprotein H (ApoH), also known as beta2-glycoprotein I (B2-GPI), is a plasma glycoprotein, primarily synthesized in the liver. It has an important function in blood coagulation and clearance of apoptotic bodies from the circulation. ApoH is also an important actor of host innate immune response through its capacity to bind with high affinity to a large panel of pathogens or their proteins.

Storage

Storage:
Store at -80°C.

Storage Buffer:
PBS only

For technical support and original validation data for this product please contact:

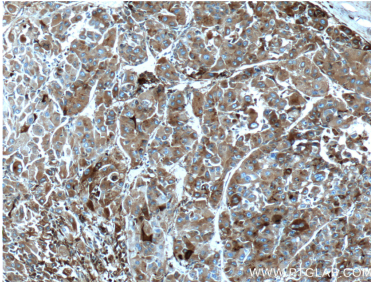
T: 4006900926

E: Proteintech-CN@ptglab.com

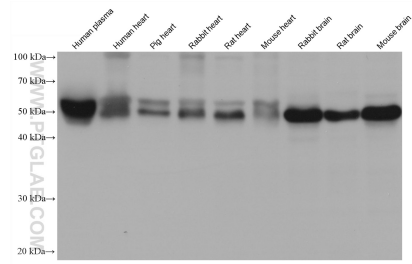
W: ptgcn.com

This product is exclusively available under Proteintech Group brand and is not available to purchase from any other manufacturer.

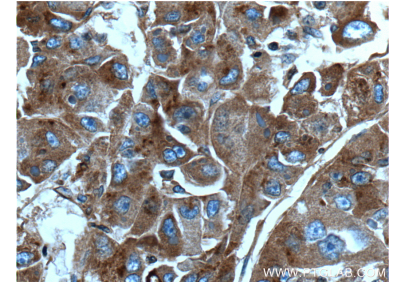
Selected Validation Data



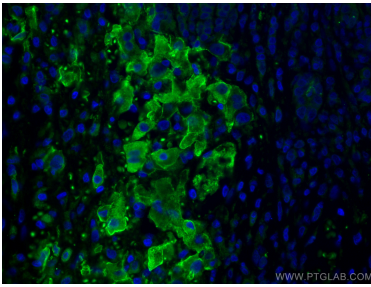
Immunohistochemical analysis of paraffin-embedded human liver cancer tissue slide using 66074-1-Ig (Apolipoprotein H antibody) at dilution of 1:400 (under 10x lens. Heat mediated antigen retrieval with Tris-EDTA buffer (pH 9.0). This data was developed using the same antibody clone with 66074-1-PBS in a different storage buffer formulation.



Various lysates were subjected to SDS PAGE followed by western blot with 66074-1-Ig (Apolipoprotein H antibody) at dilution of 1:10000 incubated at room temperature for 1.5 hours. This data was developed using the same antibody clone with 66074-1-PBS in a different storage buffer formulation.



Immunohistochemical analysis of paraffin-embedded human liver cancer tissue slide using 66074-1-Ig (Apolipoprotein H antibody) at dilution of 1:400 (under 40x lens. Heat mediated antigen retrieval with Tris-EDTA buffer (pH 9.0). This data was developed using the same antibody clone with 66074-1-PBS in a different storage buffer formulation.



Immunofluorescent analysis of (4% PFA) fixed human liver cancer tissue using Apolipoprotein H antibody (66074-1-Ig, Clone: 4D9A4) at dilution of 1:400 and CoraLite®488-Conjugated AffiniPure Goat Anti-Mouse IgG(H+L). This data was developed using the same antibody clone with 66074-1-PBS in a different storage buffer formulation.