

For Research Use Only

Serum amyloid P component Monoclonal antibody, PBS Only



Catalog Number: 66084-1-PBS

Basic Information

Catalog Number: 66084-1-PBS	GenBank Accession Number: BC007058	Purification Method: Protein A purification
Size: 1 mg/ml	GeneID (NCBI): 325	CloneNo.: 1A1D10
Source: Mouse	UNIPROT ID: P02743	
Isotype: IgG2b	Full Name: amyloid P component, serum	
Immunogen Catalog Number: AG14957	Calculated MW: 223 aa, 25 kDa	
	Observed MW: 27 kDa	

Applications

Tested Applications:
WB, Indirect ELISA, IHC, IF

Species Specificity:
human

Background Information

Serum amyloid P component (SAP), a member of pentraxin family, is a constitutive serum protein that is synthesized by hepatocytes. It is an acute phase protein, structurally related to C-reactive protein. SAP is a calcium-dependent ligand binding protein, which can interact with DNA and histones and may scavenge nuclear material released from damaged circulating cells.

Storage

Storage:
Store at -80°C.

Storage Buffer:
PBS Only

For technical support and original validation data for this product please contact:

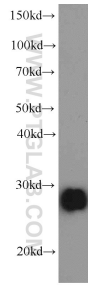
T: 4006900926

E: Proteintech-CN@ptglab.com

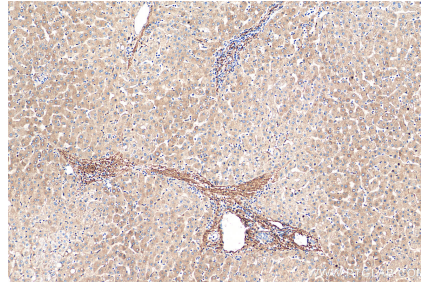
W: ptgcn.com

This product is exclusively available under Proteintech Group brand and is not available to purchase from any other manufacturer.

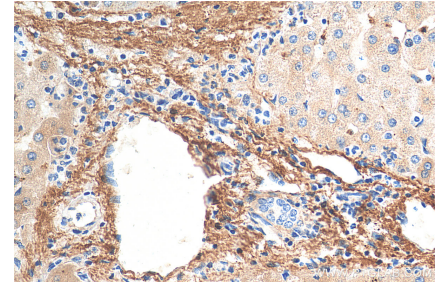
Selected Validation Data



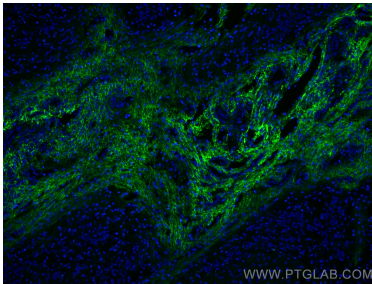
human kidney tissue were subjected to SDS PAGE followed by western blot with 66084-1-Ig (Serum amyloid P component antibody) at dilution of 1:1000 incubated at room temperature for 1.5 hours. This data was developed using the same antibody clone with 66084-1-PBS in a different storage buffer formulation.



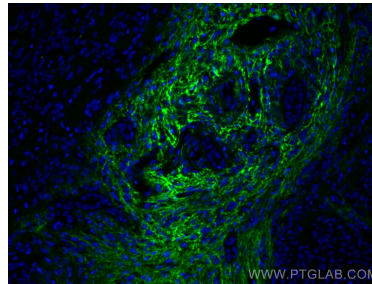
Immunohistochemical analysis of paraffin-embedded human liver tissue slide using 66084-1-Ig (Serum amyloid P component antibody) at dilution of 1:200 (under 10x lens). Heat mediated antigen retrieval with Tris-EDTA buffer (pH 9.0). This data was developed using the same antibody clone with 66084-1-PBS in a different storage buffer formulation.



Immunohistochemical analysis of paraffin-embedded human liver tissue slide using 66084-1-Ig (Serum amyloid P component antibody) at dilution of 1:200 (under 40x lens). Heat mediated antigen retrieval with Tris-EDTA buffer (pH 9.0). This data was developed using the same antibody clone with 66084-1-PBS in a different storage buffer formulation.



Immunofluorescent analysis of (4% PFA) fixed human liver cancer tissue using Serum amyloid P component antibody (66084-1-Ig, Clone: 1A1D10) at dilution of 1:400 and CoraLite®488-Conjugated AffiniPure Goat Anti-Mouse IgG(H+L). This data was developed using the same antibody clone with 66084-1-PBS in a different storage buffer formulation.



Immunofluorescent analysis of (4% PFA) fixed human liver cancer tissue using Serum amyloid P component antibody (66084-1-Ig, Clone: 1A1D10) at dilution of 1:400 and CoraLite®488-Conjugated AffiniPure Goat Anti-Mouse IgG(H+L). This data was developed using the same antibody clone with 66084-1-PBS in a different storage buffer formulation.