

For Research Use Only

# NCALD Monoclonal antibody, PBS Only



Catalog Number: 66088-1-PBS

## Basic Information

Catalog Number: 66088-1-PBS	GenBank Accession Number: BC036098	Purification Method: Protein A purification
Size: 1 mg/ml	GeneID (NCBI): 83988	CloneNo.: 6B4E10
Source: Mouse	UNIPROT ID: P61601	
Isotype: IgG2a	Full Name: neurocalcin delta	
Immunogen Catalog Number: AG18760	Calculated MW: 193 aa, 22 kDa	
	Observed MW: 22 kDa	

## Applications

**Tested Applications:**  
WB, Indirect ELISA, IHC, IF

**Species Specificity:**  
human, mouse, pig, rat

## Background Information

NCALD (Neurocalcin-delta) is a member of the EF-hand calcium-binding protein superfamily. It may be involved in the calcium-dependent regulation of rhodopsin phosphorylation. It is a high-affinity  $Ca^{2+}$  sensor ( $K_d$  of approx. 0.6  $\mu M$ ), which is most abundantly expressed in the Purkinje cells of the cerebellum (PMID:11964161). This antibody is specific to NCALD.

## Storage

**Storage:**  
Store at  $-80^{\circ}C$ .  
**The product is shipped with ice packs. Upon receipt, store it immediately at  $-80^{\circ}C$**

**Storage Buffer:**  
PBS Only

For technical support and original validation data for this product please contact:

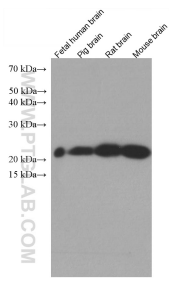
T: 4006900926

E: [Proteintech-CN@ptglab.com](mailto:Proteintech-CN@ptglab.com)

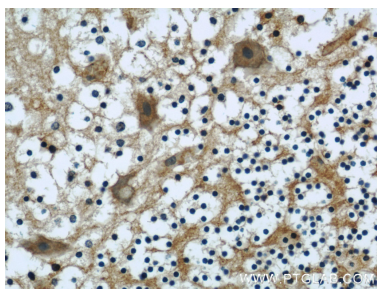
W: [ptgcn.com](http://ptgcn.com)

**This product is exclusively available under Proteintech Group brand and is not available to purchase from any other manufacturer.**

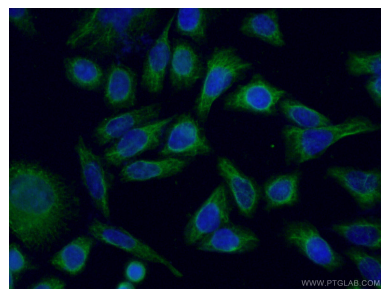
## Selected Validation Data



Various lysates were subjected to SDS PAGE followed by western blot with 66088-1-Ig (NCALD antibody) at dilution of 1:1600 incubated at room temperature for 1.5 hours. This data was developed using the same antibody clone with 66088-1-PBS in a different storage buffer formulation.



Immunohistochemical analysis of paraffin-embedded human cerebellum using 66088-1-Ig(NCALD antibody) at dilution of 1:50 (under 40x lens). This data was developed using the same antibody clone with 66088-1-PBS in a different storage buffer formulation.



Immunofluorescent analysis of (-20°C Ethanol) fixed HeLa cells using 66088-1-Ig (NCALD antibody) at dilution of 1:50 and Alexa Fluor 488-Conjugated AffiniPure Goat Anti-Mouse IgG(H+L). This data was developed using the same antibody clone with 66088-1-PBS in a different storage buffer formulation.