

For Research Use Only

# CD22 Monoclonal antibody, PBS Only



Catalog Number: 66103-1-PBS

## Basic Information

<b>Catalog Number:</b> 66103-1-PBS	<b>GenBank Accession Number:</b> BC109306	<b>Purification Method:</b> Protein A purification
<b>Size:</b> 1 mg/ml	<b>GeneID (NCBI):</b> 933	<b>CloneNo.:</b> 7A2F1
<b>Source:</b> Mouse	<b>UNIPROT ID:</b> P20273	
<b>Isotype:</b> IgG2a	<b>Full Name:</b> CD22 molecule	
<b>Immunogen Catalog Number:</b> AG17986	<b>Calculated MW:</b> 847 aa, 95 kDa	
	<b>Observed MW:</b> 135 kDa	

## Applications

**Tested Applications:**  
WB,IHC,IF,ELISA

**Species Specificity:**  
human

## Background Information

CD22, also known as Siglec-2 (sialic acid binding Ig-like lectin 2) or BL-CAM (B-lymphocyte cell adhesion molecule), is a 130-140 kDa, B-cell restricted, type I transmembrane glycoprotein belonging to the immunoglobulin gene superfamily. The expression of CD22 is developmentally regulated. It is expressed at low levels in the cytoplasm of pro-B and pre-B cells and present on the cell surface only at mature stages of B-cell differentiation. Cell surface expression is lost during terminal differentiation into plasma cell and after B-cell activation. CD22 is an inhibitory receptor for B-cell receptor (BCR) signalling, preferentially binds to alpha-2,6-linked sialic acid and mediates B-cell B-cell interactions. It plays a crucial role in activation and differentiation of the B-cell.

## Storage

**Storage:**  
Store at -20°C. Stable for one year after shipment.

**Storage Buffer:**  
PBS only

Aliquoting is unnecessary for -20°C storage

For technical support and original validation data for this product please contact:

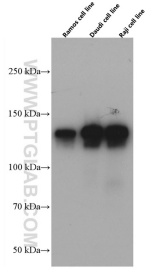
T: 4006900926

E: [Proteintech-CN@ptglab.com](mailto:Proteintech-CN@ptglab.com)

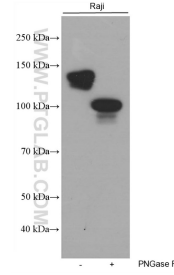
W: [ptgcn.com](http://ptgcn.com)

**This product is exclusively available under Proteintech Group brand and is not available to purchase from any other manufacturer.**

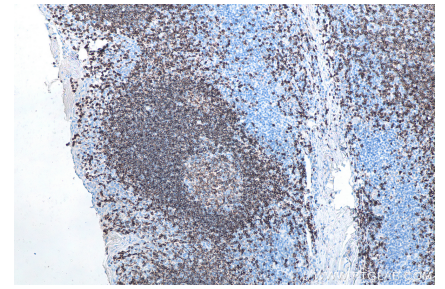
## Selected Validation Data



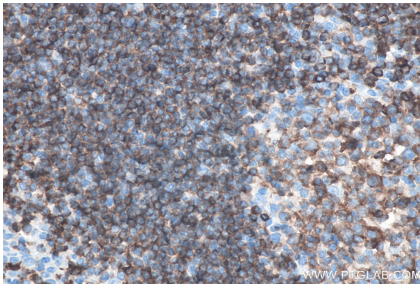
Ramos, Daudi, and Raji cells were subjected to SDS PAGE followed by western blot with 66103-1-Ig (CD22 antibody) at dilution of 1:5000 incubated at room temperature for 1.5 hours. This data was developed using the same antibody clone with 66103-1-PBS in a different storage buffer formulation.



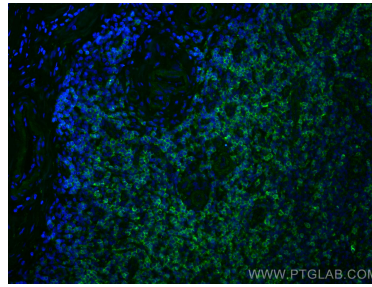
Untreated and PNGase F-treated lysates of Raji cells were subjected to SDS PAGE followed by western blot with 66103-1-Ig (CD22 antibody) at dilution of 1:20000 incubated at room temperature for 1.5 hours. PNGase F was obtained from Atagenix (cat.NO. ata808). This data was developed using the same antibody clone with 66103-1-PBS in a different storage buffer formulation.



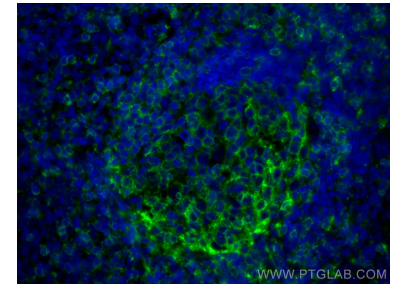
Immunohistochemical analysis of paraffin-embedded human tonsillitis tissue slide using 66103-1-Ig (CD22 antibody) at dilution of 1:20000 (under 10x lens). Heat mediated antigen retrieval with Tris-EDTA buffer (pH 9.0). This data was developed using the same antibody clone with 66103-1-PBS in a different storage buffer formulation.



Immunohistochemical analysis of paraffin-embedded human tonsillitis tissue slide using 66103-1-Ig (CD22 antibody) at dilution of 1:20000 (under 40x lens). Heat mediated antigen retrieval with Tris-EDTA buffer (pH 9.0). This data was developed using the same antibody clone with 66103-1-PBS in a different storage buffer formulation.



Immunofluorescent analysis of (4% PFA) fixed human tonsillitis tissue using CD22 antibody (66103-1-Ig, Clone: 7A2F1) at dilution of 1:400 and Coralite@488-Conjugated AffiniPure Goat Anti-Mouse IgG(H+L). This data was developed using the same antibody clone with 66103-1-PBS in a different storage buffer formulation.



Immunofluorescent analysis of (4% PFA) fixed human tonsillitis tissue using CD22 antibody (66103-1-Ig, Clone: 7A2F1) at dilution of 1:400 and Coralite@488-Conjugated AffiniPure Goat Anti-Mouse IgG(H+L). This data was developed using the same antibody clone with 66103-1-PBS in a different storage buffer formulation.