

For Research Use Only

CD22 Monoclonal antibody, PBS Only (Capture/Detector)



Catalog Number: 66103-4-PBS

Basic Information

Catalog Number: 66103-4-PBS	GenBank Accession Number: BC109306	Purification Method: Protein A Magarose purification
Size: 1 mg/ml	GeneID (NCBI): 933	CloneNo.: 7C1A12
Source: Mouse	UNIPROT ID: P20273	
Isotype: IgG2a	Full Name: CD22 molecule	
Immunogen Catalog Number: AG17986	Calculated MW: 847 aa, 95 kDa	

Applications

Tested Applications:
Cytometric bead array, Indirect ELISA

Species Specificity:
human

Background Information

Storage

Storage:
Store at -80°C.
The product is shipped with ice packs. Upon receipt, store it immediately at -80°C

Storage Buffer:
PBS Only

For technical support and original validation data for this product please contact:

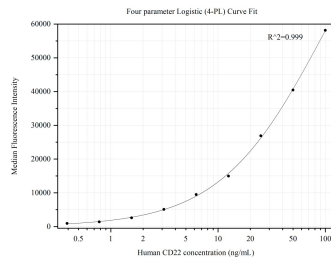
T: 4006900926

E: Proteintech-CN@ptglab.com

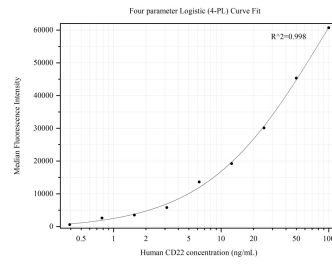
W: ptgcn.com

This product is exclusively available under Proteintech Group brand and is not available to purchase from any other manufacturer.

Selected Validation Data



Cytometric bead array standard curve of MP50311-2, CD22 Monoclonal Matched Antibody Pair, PBS Only. Capture antibody: 66103-4-PBS. Detection antibody: 66103-3-PBS. Standard: Ag17986. Range: 0.391-100 ng/mL.



Cytometric bead array standard curve of MP50311-3, CD22 Monoclonal Matched Antibody Pair, PBS Only. Capture antibody: 66103-5-PBS. Detection antibody: 66103-4-PBS. Standard: Ag17986. Range: 0.391-100 ng/mL.