

For Research Use Only

ECHS1 Monoclonal antibody, PBS Only



Catalog Number: 66117-1-PBS

Featured Product

Basic Information

Catalog Number:

66117-1-PBS

Size:

1 mg/ml

Source:

Mouse

Isotype:

IgG2b

Immunogen Catalog Number:

AG16775

GenBank Accession Number:

BC008906

GeneID (NCBI):

1892

UNIPROT ID:

P30084

Full Name:

enoyl Coenzyme A hydratase, short chain, 1, mitochondrial

Calculated MW:

31 kDa

Observed MW:

31 kDa

Purification Method:

Protein A purification

CloneNo.:

2B9D5

Applications

Tested Applications:

WB,IP,Indirect ELISA,IHC,IF

Species Specificity:

human

Background Information

Enoyl-coenzyme A hydratase (ECHS1) is a mitochondrial protein which catalyzes the hydration of 2-trans-enoyl-coenzyme A intermediates to L-3-hydroxyacyl-coenzyme A, playing key role in metabolism of fatty acids in mitochondria. ECHS1 is highly expressed in muscle, liver and fibroblasts. Altered expression of ECHS1 has been considered as a characteristic feature of mitochondria dysfunction. (23275097, 23235493)

Storage

Storage:

Store at -80°C.

Storage Buffer:

PBS Only

For technical support and original validation data for this product please contact:

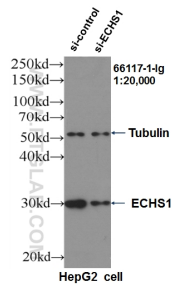
T: 4006900926

E: Proteintech-CN@ptglab.com

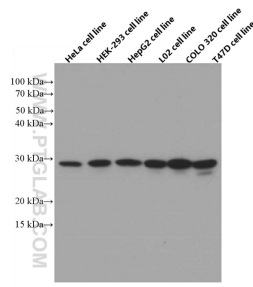
W: ptgcn.com

This product is exclusively available under Proteintech Group brand and is not available to purchase from any other manufacturer.

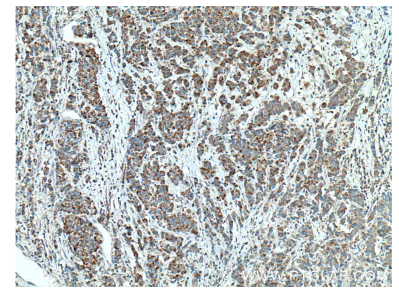
Selected Validation Data



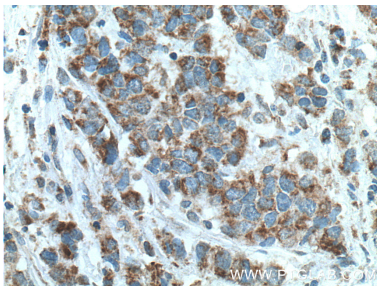
WB result of ECHS1 antibody (66117-1-Ig, 1:20,000) with si-Control and si-ECHS1 transfected HepG2 cells. This data was developed using the same antibody clone with 66117-1-PBS in a different storage buffer formulation.



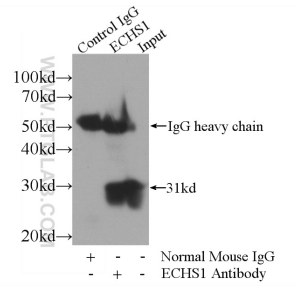
Various cells were subjected to SDS PAGE followed by western blot with 66117-1-Ig (ECHS1 antibody) at dilution of 1:20000 incubated at room temperature for 1.5 hours. This data was developed using the same antibody clone with 66117-1-PBS in a different storage buffer formulation.



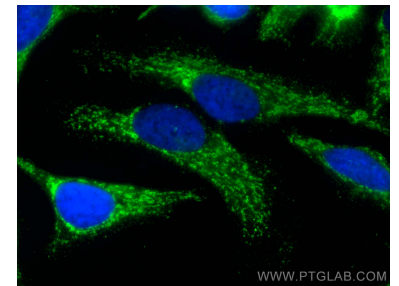
Immunohistochemical analysis of paraffin-embedded human prostate cancer tissue slide using 66117-1-Ig (ECHS1 antibody) at dilution of 1:1000 (under 10x lens). Heat mediated antigen retrieval with Tris-EDTA buffer (pH 9.0). This data was developed using the same antibody clone with 66117-1-PBS in a different storage buffer formulation.



Immunohistochemical analysis of paraffin-embedded human prostate cancer tissue slide using 66117-1-Ig (ECHS1 antibody) at dilution of 1:1000 (under 40x lens). Heat mediated antigen retrieval with Tris-EDTA buffer (pH 9.0). This data was developed using the same antibody clone with 66117-1-PBS in a different storage buffer formulation.



IP result of anti-ECHS1 (IP:66117-1-Ig, 3ug; Detection:66117-1-Ig 1:1000) with HepG2 cells lysate 3600ug. This data was developed using the same antibody clone with 66117-1-PBS in a different storage buffer formulation.



Immunofluorescent analysis of (-20°C Methanol) fixed HeLa cells using ECHS1 antibody (66117-1-Ig, Clone: 2B9D5) at dilution of 1:800 and CoraLite@488-Conjugated AffiniPure Goat Anti-Mouse IgG(H+L). This data was developed using the same antibody clone with 66117-1-PBS in a different storage buffer formulation.