

For Research Use Only

# PDH E1 Alpha Monoclonal antibody, PBS Only



Catalog Number: 66119-1-PBS

Featured Product

## Basic Information

Catalog Number:

66119-1-PBS

Size:

1 mg/ml

Source:

Mouse

Isotype:

IgG2a

Immunogen Catalog Number:

AG12556

GenBank Accession Number:

BC002406

GeneID (NCBI):

5160

UNIPROT ID:

P08559

Full Name:

pyruvate dehydrogenase (lipoamide)

alpha 1

Calculated MW:

43 kDa

Observed MW:

43 kDa

Purification Method:

Protein A purification

CloneNo.:

2B3C10

## Applications

Tested Applications:

WB,IP,Indirect ELISA,IHC,IF,FC

Species Specificity:

human

## Background Information

PDHA1(Pyruvate dehydrogenase E1 component subunit alpha, somatic form, mitochondrial) is also named as PHE1A.It is one of the 3 enzymes of the pyruvate dehydrogenase complex which is a nuclear-encoded mitochondrial matrix multienzyme complex that provides the primary link between glycolysis and the tricarboxylic acid (TCA) cycle by catalyzing the irreversible conversion of pyruvate into acetyl-CoA(PMID:7853374).It has 4 isoforms produced by alternative splicing.Defects in PDHA1 are a cause of pyruvate dehydrogenase E1-alpha deficiency (PDHAD) and X-linked Leigh syndrome (X-LS).

## Storage

Storage:

Store at -80°C.

Storage Buffer:

PBS Only

For technical support and original validation data for this product please contact:

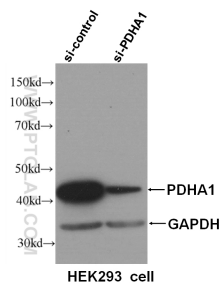
T: 4006900926

E: Proteintech-CN@ptglab.com

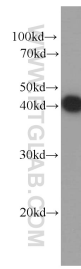
W: ptgcn.com

This product is exclusively available under Proteintech Group brand and is not available to purchase from any other manufacturer.

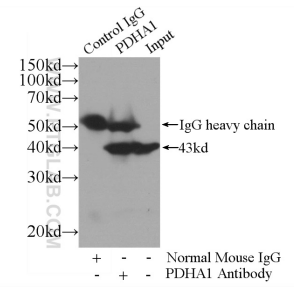
## Selected Validation Data



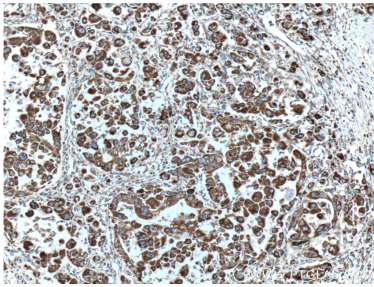
WB result of PDHA1 antibody (66119-1-Ig, 1:30000) with si-control and si-PDHA1 transfected HEK293 cells. This data was developed using the same antibody clone with 66119-1-PBS in a different storage buffer formulation.



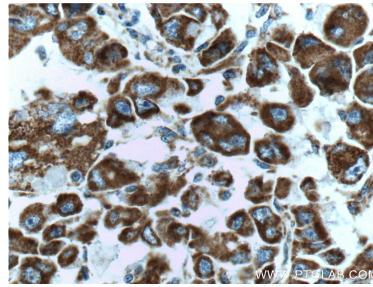
HEK-293 cells were subjected to SDS PAGE followed by western blot with 66119-1-Ig (PDH E1  $\alpha$  antibody) at dilution of 1:20000 incubated at room temperature for 1.5 hours. This data was developed using the same antibody clone with 66119-1-PBS in a different storage buffer formulation.



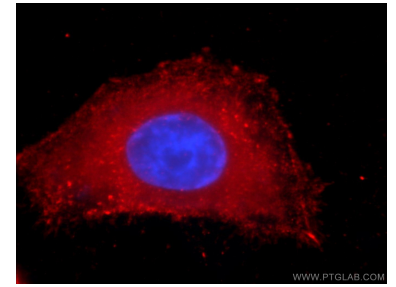
IP result of anti-PDH E1 Alpha (IP:66119-1-Ig, 3ug; Detection:66119-1-Ig 1:10000) with HEK-293 cells lysate 1800ug. This data was developed using the same antibody clone with 66119-1-PBS in a different storage buffer formulation.



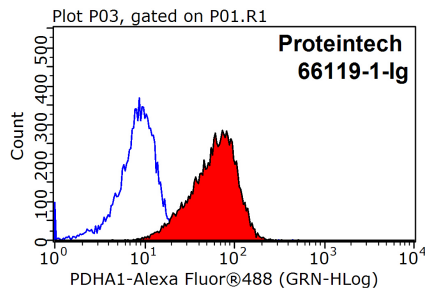
Immunohistochemical analysis of paraffin-embedded human liver cancer tissue slide using 66119-1-Ig (PDH E1  $\alpha$  antibody) at dilution of 1:800 (under 10x lens). Heat mediated antigen retrieval with Tris-EDTA buffer (pH 9.0). This data was developed using the same antibody clone with 66119-1-PBS in a different storage buffer formulation.



Immunohistochemical analysis of paraffin-embedded human liver cancer tissue slide using 66119-1-Ig (PDH E1  $\alpha$  antibody) at dilution of 1:800 (under 40x lens). Heat mediated antigen retrieval with Tris-EDTA buffer (pH 9.0). This data was developed using the same antibody clone with 66119-1-PBS in a different storage buffer formulation.



Immunofluorescent analysis of HepG2 cells using 66119-1-Ig (PDH E1  $\alpha$  antibody) at dilution of 1:100 and Rhodamine-Goat anti-Mouse IgG. This data was developed using the same antibody clone with 66119-1-PBS in a different storage buffer formulation.



$1 \times 10^6$  HepG2 cells were stained with .2ug PDH E1  $\alpha$  antibody (66119-1-Ig, red) and control antibody (blue). Fixed with 90% MeOH blocked with 3% BSA (30 min). Alexa Fluor 488-conjugated AffiniPure Goat Anti-Mouse IgG(H+L) with dilution 1:1000. This data was developed using the same antibody clone with 66119-1-PBS in a different storage buffer formulation.