

For Research Use Only

Alpha-2-Macroglobulin Monoclonal antibody, PBS Only



Catalog Number: 66126-1-PBS

Basic Information

Catalog Number: 66126-1-PBS	GenBank Accession Number: BC040071	Purification Method: Protein A purification
Size: 1 mg/ml	GeneID (NCBI): 2	CloneNo.: 4B11F7
Source: Mouse	UNIPROT ID: P01023	
Isotype: IgG2a	Full Name: alpha-2-macroglobulin	
Immunogen Catalog Number: AG19245	Calculated MW: 1474 aa, 163 kDa	
	Observed MW: 185 kDa	

Applications

Tested Applications:
WB,IP,Indirect ELISA,IHC,IF

Species Specificity:
human

Background Information

alpha-2-macroglobulin, also known as α 2-macroglobulin (α 2M and A2M), is a protein abundant in the plasma of vertebrates and several invertebrates. A2M is an evolutionarily conserved arm of the innate immune system. It also mediates the proliferation of T cells and macrophages. A2M acts as a nonspecific protease inhibitor involved in the host defense mechanism that inactivates both endogenous and exogenous proteases, including trypsin, thrombin and collagenase. Even though A2M is produced predominantly by the liver, it may also be expressed in the reproductive tract, heart, and brain, and may have important roles in many physiological processes and medical illnesses including Alzheimer's disease.

Storage

Storage:
Store at -80°C.
The product is shipped with ice packs. Upon receipt, store it immediately at -80°C

Storage Buffer:
PBS Only

For technical support and original validation data for this product please contact:

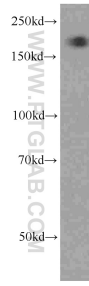
T: 4006900926

E: Proteintech-CN@ptglab.com

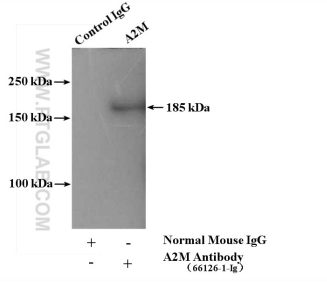
W: ptgcn.com

This product is exclusively available under Proteintech Group brand and is not available to purchase from any other manufacturer.

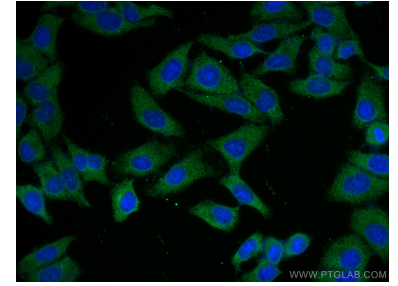
Selected Validation Data



HepG2 cells were subjected to SDS PAGE followed by western blot with 66126-1-Ig (Alpha-2-macroglobulin antibody) at dilution of 1:1000 incubated at room temperature for 1.5 hours. This data was developed using the same antibody clone with 66126-1-PBS in a different storage buffer formulation.



IP result of anti-Alpha-2-Macroglobulin (IP:66126-1-Ig, 5ug; Detection:66126-1-Ig 1:500) with human plasma lysate 4000ug. This data was developed using the same antibody clone with 66126-1-PBS in a different storage buffer formulation.



Immunofluorescent analysis of (-20°C Methanol) fixed HepG2 cells using Alpha-2-Macroglobulin antibody (66126-1-Ig, Clone: 4B11F7) at dilution of 1:400 and CoraLite®488-Conjugated AffiniPure Goat Anti-Mouse IgG(H+L). This data was developed using the same antibody clone with 66126-1-PBS in a different storage buffer formulation.



Immunohistochemical analysis of paraffin-embedded human liver tissue slide using 66126-1-Ig (Alpha-2-Macroglobulin antibody) at dilution of 1:32000 (under 10x lens). Heat mediated antigen retrieval with Tris-EDTA buffer (pH 9.0). This data was developed using the same antibody clone with 66126-1-PBS in a different storage buffer formulation.



Immunohistochemical analysis of paraffin-embedded human liver tissue slide using 66126-1-Ig (Alpha-2-Macroglobulin antibody) at dilution of 1:32000 (under 40x lens). Heat mediated antigen retrieval with Tris-EDTA buffer (pH 9.0). This data was developed using the same antibody clone with 66126-1-PBS in a different storage buffer formulation.