

For Research Use Only

S1 tag Monoclonal antibody, PBS Only



Catalog Number: 66165-1-PBS

Basic Information

Catalog Number:

66165-1-PBS

Size:

1 mg/ml

Source:

Mouse

Isotype:

IgG2b

GenBank Accession Number:

GeneID (NCBI):

Full Name:

Purification Method:

Protein A purification

CloneNo.:

1A9B5

Applications

Tested Applications:

WB, Indirect ELISA

Species Specificity:

recombinant protein

Background Information

S1 tag, with sequence NANNPDWDF, is derived from the hepatitis B virus preS1 region. S1 tag is widely used in various protein expression systems. This antibody can detect the over-expressed fusion proteins containing S1 epitope tag.

Storage

Storage:

Store at -80°C.

The product is shipped with ice packs. Upon receipt, store it immediately at -80°C

Storage Buffer:

PBS Only

For technical support and original validation data for this product please contact:

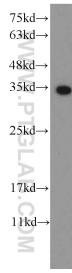
T: 4006900926

E: Proteintech-CN@ptglab.com

W: ptgcn.com

This product is exclusively available under Proteintech Group brand and is not available to purchase from any other manufacturer.

Selected Validation Data



Recombinant protein were subjected to SDS PAGE followed by western blot with 66165-1-Ig (S1 tag Antibody) at dilution of 1:10000 incubated at room temperature for 1.5 hours. This data was developed using the same antibody clone with 66165-1-PBS in a different storage buffer formulation.