

For Research Use Only

TBP Monoclonal antibody, PBS Only

Catalog Number: 66166-1-PBS



Basic Information

| | | |
|---|---|---|
| Catalog Number: 66166-1-PBS | GenBank Accession Number: BC110341 | Purification Method: Protein A purification |
| Size: 1mg/ml | GeneID (NCBI): 6908 | CloneNo.: 2H3B2 |
| Source: Mouse | UNIPROT ID: P20226 | |
| Isotype: IgG2a | Full Name: TATA box binding protein | |
| Immunogen Catalog Number: AG12383 | Calculated MW: 338 aa, 38 kDa | |
| | Observed MW: mouse/rat 33-36 kDa and human 37-43kDa | |

Applications

Tested Applications:
WB, IP, IF, IHC, Indirect ELISA

Species Specificity:
human, mouse, rat, pig

Background Information

The TATA binding protein (TBP) is a transcription factor that binds specifically to a DNA sequence TATA box. This DNA sequence is found about 25-30 base pairs upstream of the transcription start site in some eukaryotic gene promoters. TBP, along with a variety of TBP-associated factors, make up the TFIID, a general transcription factor that in turn makes up part of the RNA polymerase II preinitiation complex. As one of the few proteins in the preinitiation complex that binds DNA in a sequence-specific manner, it helps position RNA polymerase II over the transcription start site of the gene. However, it is estimated that only 10-20% of human promoters have TATA boxes. Therefore, TBP is probably not the only protein involved in positioning RNA polymerase II. This antibody detects human TBP (~40 kDa) and mouse/rat Tbp (~35 kDa).

Storage

Storage:
Store at -80°C.
The product is shipped with ice packs. Upon receipt, store it immediately at -80°C

Storage Buffer:
PBS Only

For technical support and original validation data for this product please contact:

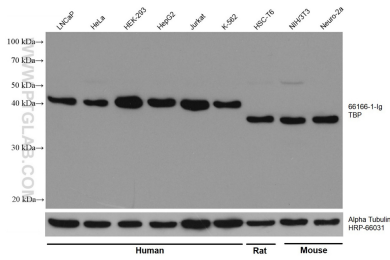
T: 4006900926

E: Proteintech-CN@ptglab.com

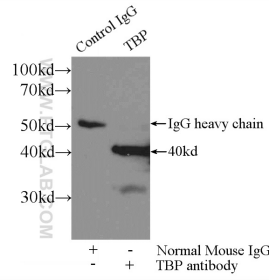
W: ptgcn.com

This product is exclusively available under Proteintech Group brand and is not available to purchase from any other manufacturer.

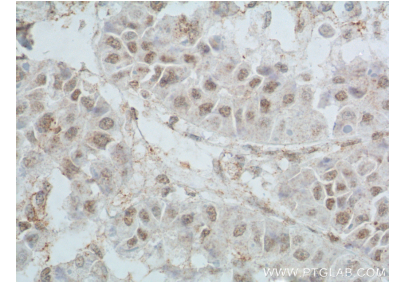
Selected Validation Data



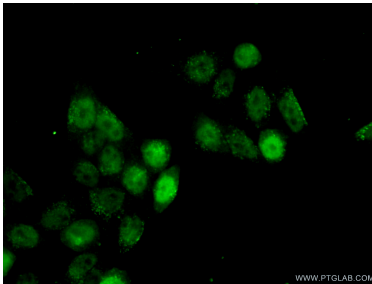
Various lysates were subjected to SDS PAGE followed by western blot with 66166-1-Ig (TBP antibody) at dilution of 1:200000 incubated at room temperature for 1.5 hours. The membrane was stripped and reblotted with HRP-conjugated Alpha Tubulin Monoclonal antibody (HRP-66031) as loading control. This data was developed using the same antibody clone with 66166-1-PBS in a different storage buffer formulation.



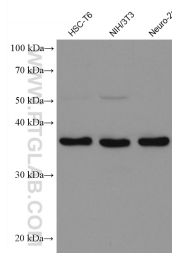
IP result of anti-TBP (IP:66166-1-Ig, 3ug; Detection:66166-1-Ig 1:800) with HEK-293 cells lysate 1800ug. This data was developed using the same antibody clone with 66166-1-PBS in a different storage buffer formulation.



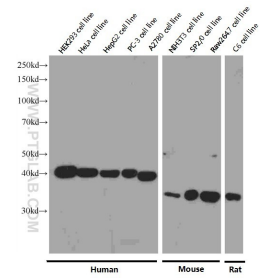
Immunohistochemical analysis of paraffin-embedded human liver cancer tissue slide using 66166-1-Ig (TBP Antibody) at dilution of 1:650 (under 40x lens). Heat mediated antigen retrieval with Tris-EDTA buffer (pH 9.0). This data was developed using the same antibody clone with 66166-1-PBS in a different storage buffer formulation.



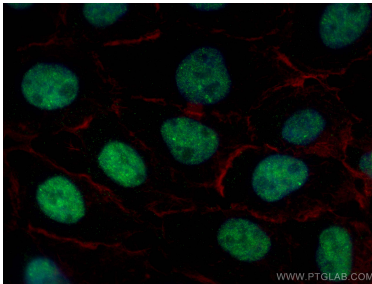
Immunofluorescent analysis of (10% Formaldehyde) fixed HeLa cells using 66166-1-Ig (TBP antibody) at dilution of 1:100 and Alexa Fluor 488-conjugated AffiniPure Goat Anti-Mouse IgG(H+L). This data was developed using the same antibody clone with 66166-1-PBS in a different storage buffer formulation.



Various lysates were subjected to SDS PAGE followed by western blot with 66166-1-Ig (TBP antibody) at dilution of 1:200000 incubated at room temperature for 1.5 hours. This data was developed using the same antibody clone with 66166-1-PBS in a different storage buffer formulation.



Western blot analysis of TBP in various cell lines using Proteintech antibody 66166-1-Ig at a dilution of 1:8000 incubated at room temperature for 1.5 hours. This data was developed using the same antibody clone with 66166-1-PBS in a different storage buffer formulation.



Immunofluorescent analysis of (4% PFA) fixed A431 cells using TBP antibody (66166-1-Ig, Clone: 2H3B2) at dilution of 1:2000 and CoraLite®488-Conjugated AffiniPure Goat Anti-Mouse IgG(H+L), CL594-phalloidin (red). This data was developed using the same antibody clone with 66166-1-PBS in a different storage buffer formulation.