

For Research Use Only

# Transferrin/TF Monoclonal antibody

Catalog Number: 66171-1-Ig **6 Publications**



## Basic Information

Catalog Number: 66171-1-Ig	GenBank Accession Number: BC059367	Purification Method: Protein G purification
Concentration: 1500 ug/ml	GeneID (NCBI): 7018	CloneNo.: 2B4C6
Source: Mouse	UNIPROT ID: P02787	Recommended Dilutions: WB 1:5000-1:50000 IHC 1:200-1:2000 IF-P 1:200-1:800
Isotype: IgG1	Full Name: transferrin	
Immunogen Catalog Number: AG11668	Calculated MW: 698 aa, 77 kDa Observed MW: 77 kDa	

## Applications

Tested Applications: WB, IHC, IF-P, ELISA	Positive Controls:
Cited Applications: WB	WB : human plasma, fetal human brain tissue
Species Specificity: human	IHC : human liver cancer tissue, human liver tissue
Cited Species: human	IF-P : human liver tissue, human placenta tissue
<b>Note-IHC: suggested antigen retrieval with TE buffer pH 9.0; (*) Alternatively, antigen retrieval may be performed with citrate buffer pH 6.0</b>	

## Background Information

Transferrin(TF) is also named as Beta-1 metal-binding globulin, Siderophilin and belongs to the transferrin family. It is a bilobal iron-binding protein that plays the crucial role of binding ferric iron and keeping it in solution, thereby controlling the levels of this important metal. Serum transferrin may have a further role in stimulating cell proliferation.

## Notable Publications

Author	Pubmed ID	Journal	Application
Z. YAN	34787870	Eur Rev Med Pharmacol Sci	WB
Yichun Zou	30579855	Neurochem Int	WB
Mian Liu	39747903	Sci Rep	

## Storage

Storage:  
Store at -20°C. Stable for one year after shipment.  
Storage Buffer:  
PBS with 0.02% sodium azide and 50% glycerol, pH7.3  
Aliquoting is unnecessary for -20°C storage

For technical support and original validation data for this product please contact:

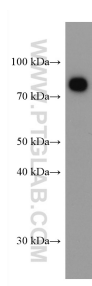
T: 4006900926

E: [Proteintech-CN@ptglab.com](mailto:Proteintech-CN@ptglab.com)

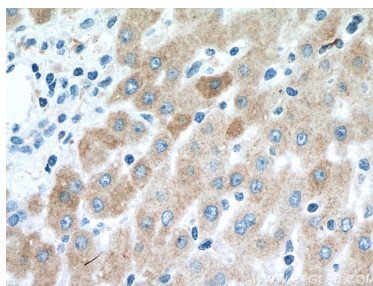
W: [ptgcn.com](http://ptgcn.com)

This product is exclusively available under Proteintech Group brand and is not available to purchase from any other manufacturer.

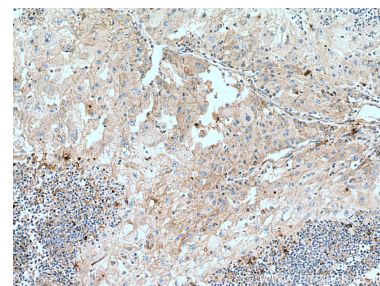
## Selected Validation Data



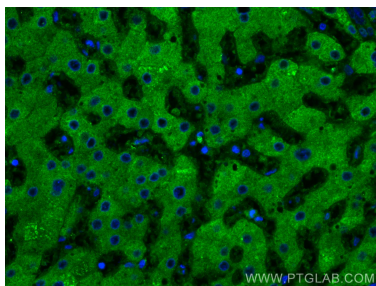
human plasma were subjected to SDS PAGE followed by western blot with 66171-1-Ig (Transferrin antibody) at dilution of 1:10000 incubated at room temperature for 1.5 hours.



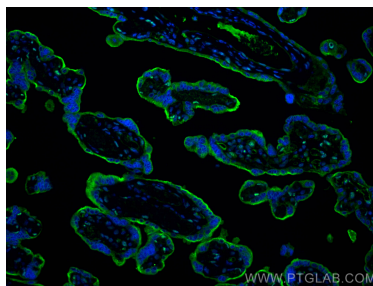
Immunohistochemical analysis of paraffin-embedded human liver cancer tissue slide using 66171-1-Ig (Transferrin antibody) at dilution of 1:2000 (under 40x lens). Heat mediated antigen retrieval with Tris-EDTA buffer (pH 9.0).



Immunohistochemical analysis of paraffin-embedded human liver cancer tissue slide using 66171-1-Ig (Transferrin antibody) at dilution of 1:2000 (under 10x lens). Heat mediated antigen retrieval with Tris-EDTA buffer (pH 9.0).



Immunofluorescent analysis of (4% PFA) fixed human liver tissue using Transferrin antibody (66171-1-Ig, Clone: 2B4C6) at dilution of 1:400 and CoraLite®488-Conjugated AffiniPure Goat Anti-Mouse IgG(H+L).



Immunofluorescent analysis of (4% PFA) fixed paraffin-embedded human placenta tissue using Transferrin antibody (66171-1-Ig, Clone: 2B4C6) at dilution of 1:400 and CoraLite®488-Conjugated AffiniPure Goat Anti-Mouse IgG(H+L) (SA00013-1). Heat mediated antigen retrieval with Tris-EDTA buffer (pH 9.0).