

For Research Use Only

Zinc Alpha 2 Glycoprotein Monoclonal antibody



Catalog Number: 66178-1-Ig **1 Publications**

Basic Information

Catalog Number: 66178-1-Ig	GenBank Accession Number: BC033830	Purification Method: Protein A purification
Size: 2200 µg/ml	GeneID (NCBI): 563	CloneNo.: 4B8A4
Source: Mouse	UNIPROT ID: P25311	Recommended Dilutions: WB 1:500-1:2000 IHC 1:20-1:200 IF-P 1:200-1:800
Isotype: IgG1	Full Name: alpha-2-glycoprotein 1, zinc-binding	
Immunogen Catalog Number: AG5661	Calculated MW: 298 aa, 34 kDa	
	Observed MW: 41 kDa	

Applications

Tested Applications: IF-P, IHC, WB, ELISA	Positive Controls: WB : human plasma tissue, IHC : human breast cancer tissue, human prostate cancer tissue, human prostate hyperplasia tissue IF-P : human breast cancer tissue,
Cited Applications: WB, IHC	
Species Specificity: human	
Cited Species: human	
Note-IHC: suggested antigen retrieval with TE buffer pH 9.0; (*) Alternatively, antigen retrieval may be performed with citrate buffer pH 6.0	

Background Information

Zinc-alpha-2-glycoprotein (AZGP1), a 41-kDa soluble protein normally found in body fluids, functions as a lipid mobilizing factor (PMID: 19188554). It is known to be expressed in the secretory epithelia of the liver, lung, breast, GI tract, and sweat glands, sharing significant structural similarity with the class I major histocompatibility complex (MHC) antigens (PMID: 3422450). AZGP1 is involved in carcinogenesis and differentiation. Altered expression of AZGP1 has been reported in breast cancer, prostate cancer and lung adenocarcinoma, hepatocellular carcinoma, pancreatic carcinoma and oral tumors (PMID: 22625427).

Notable Publications

Author	Pubmed ID	Journal	Application
Hong Tang	28053542	Onco Targets Ther	WB,IHC

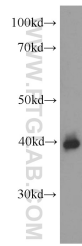
Storage

Storage:
Store at -20°C. Stable for one year after shipment.
Storage Buffer:
PBS with 0.02% sodium azide and 50% glycerol pH 7.3.
Aliquoting is unnecessary for -20°C storage

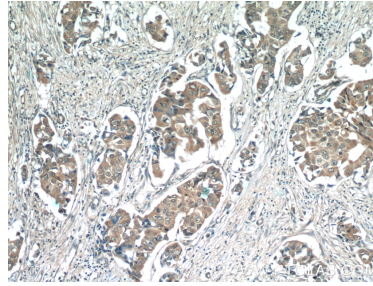
For technical support and original validation data for this product please contact:
T: 4006900926 E: Proteintech-CN@ptglab.com W: ptgcn.com

This product is exclusively available under Proteintech Group brand and is not available to purchase from any other manufacturer.

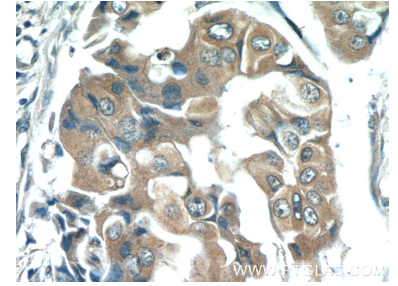
Selected Validation Data



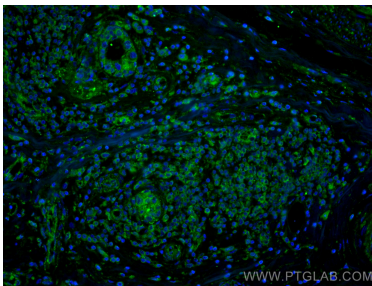
human plasma were subjected to SDS PAGE followed by western blot with 66178-1-Ig (AZGP1 Antibody) at dilution of 1:1000 incubated at room temperature for 1.5 hours.



Immunohistochemical analysis of paraffin-embedded human breast cancer tissue slide using 66178-1-Ig (AZGP1 Antibody) at dilution of 1:50 (under 10x lens).



Immunohistochemical analysis of paraffin-embedded human breast cancer tissue slide using 66178-1-Ig (AZGP1 Antibody) at dilution of 1:50 (under 40x lens).



Immunofluorescent analysis of (4% PFA) fixed human breast cancer tissue using Zinc Alpha 2 Glycoprotein antibody (66178-1-Ig, Clone: 4B8A4) at dilution of 1:400 and CoraLite@488-Conjugated AffiniPure Goat Anti-Mouse IgG(H+L).