

For Research Use Only

# SMARCE1 Monoclonal antibody, PBS Only



Catalog Number: 66182-1-PBS

## Basic Information

Catalog Number:

66182-1-PBS

Size:

1 mg/ml

Source:

Mouse

Isotype:

IgG1

Immunogen Catalog Number:

AG1161

GenBank Accession Number:

BC007082

GeneID (NCBI):

6605

UNIPROT ID:

Q969G3

Full Name:

SWI/SNF related, matrix associated, actin dependent regulator of chromatin, subfamily e, member 1

Calculated MW:

47 kDa

Observed MW:

50-55 kDa

Purification Method:

Protein G purification

CloneNo.:

1F3D6

## Applications

Tested Applications:

WB, Indirect ELISA, IHC, IF

Species Specificity:

human, mouse, rat

## Background Information

Via antagonizing chromatin-mediated transcriptional repression, the SWI/SNF complex in *S. cerevisiae* and *Drosophila* is thought to facilitate transcriptional activation of specific genes. The BRG1/brm-associated factors, or SMARCE1, complex in mammals is functionally related to SWI/SNF and consists of 9 to 12 subunits, some of which are homologous to SWI/SNF subunits. It contains a DNA-binding HMG domain and performs multiple biological functions, including DNA-, protein- and chromatin-binding, transcription coactivating activity, chromatin modification, DNA-dependent negative regulation of transcription, regulation of transcription of the RNA polymerase II promoter. In addition, SMARCE1, as an ER (estrogen receptor) subtype-selective modulator, regulates ER mediated transcription in a ligand-dependent manner and also directly binds to AR (androgen receptor) to alter its activity. The calculated molecular weight of SMARCE1 is 47 kDa, but modified SMARCE1 is about 55 kDa.

## Storage

Storage:

Store at -80°C.

Storage Buffer:

PBS Only

For technical support and original validation data for this product please contact:

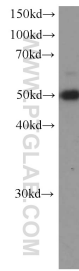
T: 4006900926

E: [Proteintech-CN@ptglab.com](mailto:Proteintech-CN@ptglab.com)

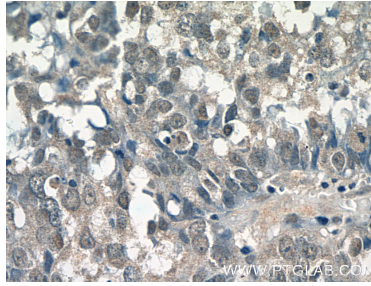
W: [ptgcn.com](http://ptgcn.com)

This product is exclusively available under Proteintech Group brand and is not available to purchase from any other manufacturer.

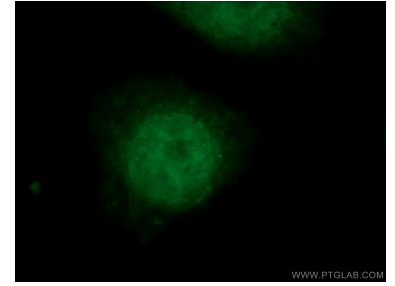
## Selected Validation Data



Jurkat cells were subjected to SDS PAGE followed by western blot with 66182-1-Ig (SMARCE1 Antibody) at dilution of 1:1000 incubated at room temperature for 1.5 hours. This data was developed using the same antibody clone with 66182-1-PBS in a different storage buffer formulation.



Immunohistochemical analysis of paraffin-embedded human breast cancer tissue slide using 66182-1-Ig (SMARCE1 Antibody) at dilution of 1:100 (under 40x lens). This data was developed using the same antibody clone with 66182-1-PBS in a different storage buffer formulation.



Immunofluorescent analysis of HEK-293 cells using 66182-1-Ig (SMARCE1 antibody) at dilution of 1:50 and FITC-Conjugated AffiniPure Goat Anti-Mouse IgG(H+L). This data was developed using the same antibody clone with 66182-1-PBS in a different storage buffer formulation.