

For Research Use Only

IL-22RA2 Monoclonal antibody, PBS Only



Catalog Number: 66190-1-PBS

Basic Information

Catalog Number: 66190-1-PBS	GenBank Accession Number: BC125167	Purification Method: Protein A purification
Size: 1 mg/ml	GeneID (NCBI): 116379	CloneNo.: 5G11A9
Source: Mouse	UNIPROT ID: Q969J5	
Isotype: IgG2a	Full Name: interleukin 22 receptor, alpha 2	
Immunogen Catalog Number: AG18682	Calculated MW: 263 aa, 31 kDa	
	Observed MW: 35 kDa	

Applications

Tested Applications:
WB, Indirect ELISA, IHC, IF

Species Specificity:
human

Background Information

Interleukin-22 receptor subunit alpha-2 (IL22RA2) is a soluble member of the type II cytokine receptor family. Through binding to IL22, IL22RA2 prevents the interaction of IL22 with the functional IL22-R complex and blocks the activity of IL22 (in vitro). IL22RA2 may play an important role as an IL22 antagonist in the regulation of inflammatory responses. Alternative splicing results in multiple transcript variants encoding distinct isoforms.

Storage

Storage:
Store at -80°C.
The product is shipped with ice packs. Upon receipt, store it immediately at -80°C

Storage Buffer:
PBS Only

For technical support and original validation data for this product please contact:

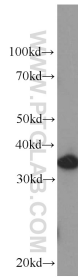
T: 4006900926

E: Proteintech-CN@ptglab.com

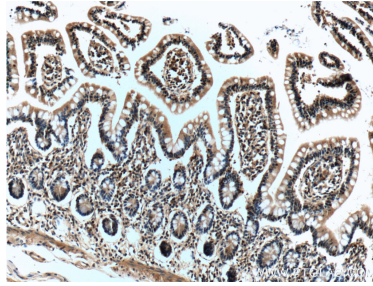
W: ptgcn.com

This product is exclusively available under Proteintech Group brand and is not available to purchase from any other manufacturer.

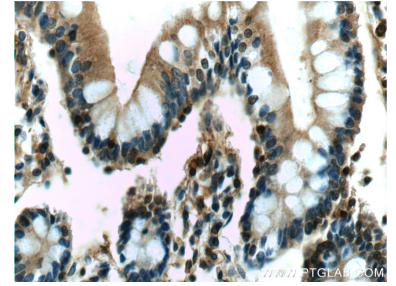
Selected Validation Data



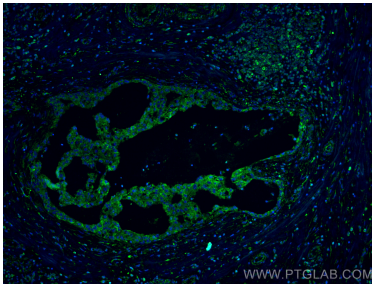
Raji cells were subjected to SDS PAGE followed by western blot with 66190-1-Ig (IL22RA2 Antibody) at dilution of 1:1000 incubated at room temperature for 1.5 hours. This data was developed using the same antibody clone with 66190-1-PBS in a different storage buffer formulation.



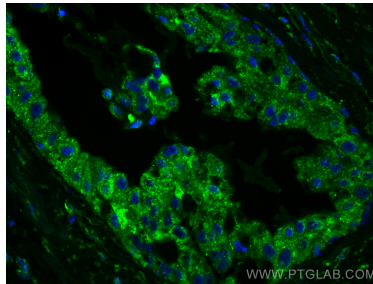
Immunohistochemical analysis of paraffin-embedded human small intestine tissue slide using 66190-1-Ig (IL22RA2 Antibody) at dilution of 1:50 (under 10x lens). This data was developed using the same antibody clone with 66190-1-PBS in a different storage buffer formulation.



Immunohistochemical analysis of paraffin-embedded human small intestine tissue slide using 66190-1-Ig (IL22RA2 Antibody) at dilution of 1:50 (under 40x lens). This data was developed using the same antibody clone with 66190-1-PBS in a different storage buffer formulation.



Immunofluorescent analysis of (4% PFA) fixed human breast cancer tissue using IL-22RA2 antibody (66190-1-Ig, Clone: 5G11A9) at dilution of 1:400 and CoraLite®488-Conjugated AffiniPure Goat Anti-Mouse IgG(H+L). This data was developed using the same antibody clone with 66190-1-PBS in a different storage buffer formulation.



Immunofluorescent analysis of (4% PFA) fixed human breast cancer tissue using IL-22RA2 antibody (66190-1-Ig, Clone: 5G11A9) at dilution of 1:400 and CoraLite®488-Conjugated AffiniPure Goat Anti-Mouse IgG(H+L). This data was developed using the same antibody clone with 66190-1-PBS in a different storage buffer formulation.